

## **A. LABELLING**

**PARTICULARS TO APPEAR ON THE OUTER PACKAGE**

{Box 240 mg}

**1. NAME OF THE VETERINARY MEDICINAL PRODUCT**

Selehold 240 mg spot-on solution

**2. STATEMENT OF ACTIVE AND OTHER SUBSTANCES**

Each 2 ml pipette contains:

Selamectin 240 mg

**3. PACKAGE SIZE**

1 x 2 ml

3 x 2 ml

6 x 2 ml

15 x 2 ml

**4. TARGET SPECIES**

Dogs

20.1–40.0 kg



**5. INDICATION(S)**



*Ctenocephalides* spp.



*Dirofilaria immitis*



*Otodectes cynotis*



*Trichodectes canis*



*Sarcoptes scabiei*



*Toxocara canis*

**6. ROUTES)OF ADMINISTRATION**

Spot-on use.



**7. WITHDRAWAL PERIOD(S)**

**8. EXPIRY DATE**

Exp. {mm/yyyy}

**9. SPECIAL STORAGE PRECAUTIONS**

Store in the original package in order to protect from moisture and light.

**10. THE WORDS “READ THE PACKAGE LEAFLET BEFORE USE”**

Read the package leaflet before use.

**11. THE WORDS “FOR ANIMAL TREATMENT ONLY”**

For animal treatment only.

**12. THE WORDS “KEEP OUT OF THE SIGHT AND REACH OF CHILDREN”**

Keep out of the sight and reach of children.

**13. NAME OF THE MARKETING AUTHORISATION HOLDER**

KRKA

**14. MARKETING AUTHORISATION NUMBER**

Vm 01656/5061

**15. BATCH NUMBER**

Lot {number}

**16. SPECIAL WARNING(S), IF NECESSARY**

**17. SPECIAL PRECAUTIONS FOR THE DISPOSAL OF UNUSED PRODUCTS OR WASTE MATERIALS, IF ANY**

Disposal: read package leaflet.

**18. CONDITIONS OR RESTRICTIONS REGARDING SUPPLY AND USE IF APPLICABLE**

**POM-V**

Veterinary medicinal product subject to prescription.

**MINIMUM PARTICULARS TO APPEAR ON SMALL IMMEDIATE PACKAGING UNITS**

{BAG 240 mg}

**1. NAME OF THE VETERINARY MEDICINAL PRODUCT**

Selehold



20.1–40.0 kg

**2. QUANTITATIVE PARTICULARS OF THE ACTIVE SUBSTANCE(S)**

selamectin 240 mg

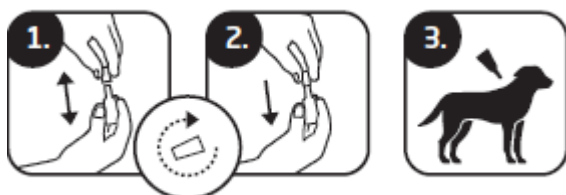
**3. BATCH NUMBER**

Lot {number}

**4. EXPIRY DATE**

Exp. {mm/yyyy}

**5. ROUTES OF ADMINISTRATION**



**6. THE WORDS “FOR ANIMAL TREATMENT ONLY”**

KRKA

**MINIMUM PARTICULARS TO APPEAR ON BLISTERS OR STRIPS**

**{PIPETTE}**

**1. NAME OF THE VETERINARY MEDICINAL PRODUCT**

Selehold



20.1–40.0 kg

**2. QUANTITATIVE PARTICULARS OF THE ACTIVE SUBSTANCE(S)**

**3. BATCH NUMBER**

Lot {number}

**4. EXPIRY DATE**

**5. THE WORDS “FOR ANIMAL TREATMENT ONLY”**

KRKA

**PARTICULARS TO APPEAR ON THE PACKAGE LEAFLET:**

**1. NAME OF THE VETERINARY MEDICINAL PRODUCT**

Selehold 30 mg spot-on solution for dogs 2.6–5.0 kg  
Selehold 60 mg spot-on solution for dogs 5.1–10.0 kg  
Selehold 120 mg spot-on solution for dogs 10.1–20.0 kg  
Selehold 240 mg spot-on solution for dogs 20.1–40.0 kg  
Selehold 360 mg spot-on solution for dogs 40.1–60.0 kg

**2. COMPOSITION**

Each 0.25 ml pipette contains:

Active substance:	
Selamectin	30 mg

Excipient:	
Butylhydroxytoluene (E321)	0.2 mg

Each 0.5 ml pipette contains:

Active substance:	
Selamectin	60 mg

Excipient:	
Butylhydroxytoluene (E321)	0.4 mg

Each 1.0 ml pipette contains:

Active substance:	
Selamectin	120 mg

Excipient:	
Butylhydroxytoluene (E321)	0.8 mg

Each 2.0 ml pipette contains:

Active substance:	
Selamectin	240 mg

Excipient:	
Butylhydroxytoluene (E321)	1.6 mg

Each 3.0 ml pipette contains:

Active substance:	
Selamectin	360 mg

Excipient:	
Butylhydroxytoluene (E321)	2.4 mg









Clear, colourless to yellow to brown solution.

### 3. TARGET SPECIES

Dogs (2.6-5.0 kg)  
Dogs (5.1-10.0 kg)  
Dogs (10.1-20.0 kg)  
Dogs (20.1-40.0 kg)  
Dogs (40.1-60.0 kg)



### 4. INDICATION(S)

- **Treatment and prevention of flea infestations**     
caused by *Ctenocephalides* spp. for one month following a single administration. This is as a result of the adulticidal, larvicidal and ovicidal properties of the veterinary medicinal product. The veterinary medicinal product is ovicidal for 3 weeks after administration. Through a reduction in the flea population, monthly treatment of pregnant and lactating animals will also aid in the prevention of flea infestations in the litter up to seven weeks of age. The veterinary medicinal product can be used as part of a treatment strategy for flea allergy dermatitis and through its ovicidal and larvicidal action may aid in the control of existing environmental flea infestations in areas to which the animal has access.
- **Treatment of ear mites** (*Otodectes cynotis*) 
- **Treatment of biting lice infestations** (*Trichodectes canis*) 
- **Treatment of sarcoptic mange** (caused by *Sarcoptes scabiei*) 
- **Treatment of adult intestinal roundworms** (*Toxocara canis*) 
- **Prevention of heartworm disease**   
caused by *Dirofilaria immitis* with monthly administration

### 5. CONTRAINDICATIONS

Do not use in animals under 6 weeks of age.  
Do not use in cases of hypersensitivity to the active substance or to any of the excipients.



## 6. ADVERSE REACTIONS

Dogs:

Rare (1 to 10 animals / 10,000 animals treated):	Application site hair changes <sup>1</sup>
Very rare (<1 animal / 10,000 animals treated, including isolated reports):	Neurological signs (including seizures) <sup>2</sup>

<sup>1</sup>Local temporary clumping of the hair at the application site and/or an occasional appearance of a small quantity of a white powder which typically disappear within 24 hours of treatment administration and does not affect either the safety or efficacy of the veterinary medicinal product.

<sup>2</sup>Reversible as with other macrocyclic lactones.

Reporting adverse events is important. It allows continuous safety monitoring of a product. If you notice any side effects, even those not already listed in this package leaflet, or you think that the medicine has not worked, please contact, in the first instance, your veterinarian. You can also report any adverse events to the marketing authorisation holder using the contact details at the end of this leaflet, or via your national reporting system {<https://www.gov.uk/report-veterinary-medicine-problem>}.

## 7. SPECIAL WARNING(S)

Special warnings for each target species:

Do not apply when the animal's hair coat is wet. Avoid frequent swimming or shampooing the animal because the maintenance of effectiveness of the veterinary medicinal product in these cases has not been investigated.

For ear mite treatment, do not apply directly to the ear canal.

It is important to apply the dose as indicated to minimise the quantity that the animal can lick off.

Selamectin may be safely administered to animals infected with adult heartworms, however, it is recommended, in accordance with good veterinary practice, that all animals 6 months of age or more living in countries where a vector exists should be tested for existing adult heartworm infections before beginning medication with selamectin. It is also recommended that dogs should be tested periodically for adult heartworm infections, as an integral part of a heartworm prevention strategy, even when the veterinary medicinal product has been administered monthly. This veterinary medicinal product is not effective against adult *D. immitis*.

Parasite resistance to any particular class of anthelmintic may develop following frequent, repeated use of an anthelmintic of that class.

Special precautions for use in animals:

This veterinary medicinal product is to be applied to the skin surface only. Do not administer orally or parenterally.

Keep treated animals away from fires and other sources of ignition for at least 30 minutes or until the hair coat is dry.

Special precautions to be taken by the person administering the veterinary medicinal product to animals:

Wash hands after use and wash off any veterinary medicinal product in contact with the skin immediately with soap and water. If accidental eye exposure occurs, flush the eyes immediately with water and seek medical advice immediately and show the package leaflet or the label to the physician.

This veterinary medicinal product is highly flammable; keep away from heat, sparks, open flames or other sources of ignition.

Do not smoke, eat or drink while handling the veterinary medicinal product.

Avoid direct contact with treated animals until the application site is dry. On the day of treatment, children must not handle treated animals and the animals should not be permitted to sleep with their owners, especially children. Used applicators should be disposed of immediately and not left within the sight or reach of children.

People with sensitive skin or known allergy to veterinary medicinal products of this type should handle the veterinary medicinal product with caution.

Special precautions for the protection of the environment:

Selamectin is toxic for aquatic organisms. Treated dogs should not be allowed to enter surface water for 48 hours after treatment, to avoid adverse effects on aquatic organisms.

Pregnancy and lactation:

Can be used during pregnancy and lactation.

Fertility:

Can be used in breeding animals.

Interaction with other medicinal products and other forms of interaction:

In extensive field testing no interactions between selamectin and routinely used veterinary medicinal products or medical or surgical procedures were observed.

Overdose (symptoms, emergency procedures, antidotes):

No undesirable effects were observed after the administration of 10 times the recommended dose. Selamectin was administered at 3 times the recommended dose to dogs infected with adult heartworms and no undesirable effects were observed. Selamectin was also administered at 3 times the recommended dose to breeding male and female dogs, including pregnant and lactating females nursing their litters and at 5 times the recommended dose to ivermectin-sensitive Collies, and no undesirable effects were observed.

## **8. DOSAGE FOR EACH SPECIES, ROUTE(S) AND METHOD OF ADMINISTRATION**

Spot-on use.

Apply to the skin at the base of the neck in front of the shoulder blades.

The veterinary medicinal product should be administered as a single application of a single dose delivering a minimum of 6 mg/kg selamectin. When concurrent infestations or infections in the same animal are to be treated with the veterinary medicinal product, only one application of the recommended 6 mg/kg dose should be administered at any one time. The appropriate length of the treatment period for individual parasites is specified below.

Administer in accordance with the following table:

Dogs (kg)	Pipette cap colour	Selamectin (mg)	Potency (mg/ml)	Volume (nominal tube size – ml)
2.6-5.0	Violet	30	120	0.25
5.1-10.0	Orange	60	120	0.5
10.1-20.0	Red	120	120	1.0
20.1-40.0	Green	240	120	2.0
40.1-60.0	Dark blue	360	120	3.0
>60	/	Appropriate combination of pipettes	/	Appropriate combination of pipettes
For dogs ≤2.5 kg, please consider the following pipette:				
≤2.5	Pink	15	60	0.25

### Flea treatment and prevention



Following administration of the veterinary medicinal product, the adult fleas on the animal are killed, no viable eggs are produced, and larvae (found only in the environment) are also killed. This stops flea reproduction, breaks the flea lifecycle and may aid in the control of existing environmental flea infestations in areas to which the animal has access.

For the prevention of flea infestations, the veterinary medicinal product should be administered at monthly intervals throughout the flea season, starting one month before fleas become active. Through a reduction in the flea population, monthly treatment of pregnant and lactating animals will aid prevention of flea infestations in the litter up to seven weeks of age.

For use as part of a treatment strategy for flea allergy dermatitis the veterinary medicinal product should be administered at monthly intervals.

### Prevention of heartworm disease



The need for treatment should be determined by the prescribing veterinarian and should be based on the local epidemiological situation (see section 6). For prevention of heartworm disease, the veterinary medicinal product should be administered within one month of the animal's first exposure to mosquitoes and monthly thereafter until 1 month after the last exposure to mosquitoes. If a dose is missed and a monthly interval between dosing is exceeded then immediate administration of the veterinary medicinal product and resumption of monthly dosing will minimise the opportunity for

the development of adult heartworms. The need for extended treatment should be determined by the prescribing veterinarian. When replacing another heartworm preventive veterinary medicinal product in a heartworm disease prevention programme, the first dose of the veterinary medicinal product must be given within a month of the last dose of the former medication.

### **Treatment of roundworm infections**



A single dose of the veterinary medicinal product should be administered.

### **Treatment of biting lice**



A single dose of the veterinary medicinal product should be administered.

### **Treatment of ear mites**



A single dose of the veterinary medicinal product should be administered. Loose debris should be gently removed from the external ear canal at the time of treatment. A further veterinary examination 30 days after treatment is recommended as some animals may require a second treatment.

### **Treatment of sarcoptic mange**

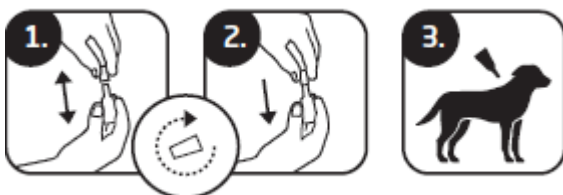


For complete elimination of the mites, a single dose of the veterinary medicinal product should be administered for two consecutive months.

## **9. ADVICE ON CORRECT ADMINISTRATION**

How to apply:

1. Remove the pipette from its packaging. Hold the pipette in an upright position, twist and pull the cap off.
2. Turn the cap around and place the other end of the cap back on the pipette. Push and twist the cap to break the seal, then remove the cap from the pipette.
3. Part the coat at the base of the neck in front of the shoulder blades until the skin is visible. Place the tip of the pipette onto the skin and squeeze the pipette several times to empty its contents completely and directly onto the skin in one spot. Avoid contact between the veterinary medicinal product and your fingers.



Do not apply when the hair coat is wet. However, shampooing or soaking the animal 2 or more hours after treatment will not reduce the efficacy of the veterinary medicinal product.

#### **10. WITHDRAWAL PERIOD(S)**

Not applicable.

#### **11. SPECIAL STORAGE PRECAUTIONS**

Keep out of the sight and reach of children.

Store in the original package in order to protect from moisture and light. This veterinary medicinal product does not require any special temperature storage conditions.

Do not use this veterinary medicinal product after the expiry date which is stated on the labels and carton after Exp. The expiry date refers to the last day of that month.

#### **12. SPECIAL PRECAUTIONS FOR THE DISPOSAL OF UNUSED PRODUCT OR WASTE MATERIALS, IF ANY**

Medicines should not be disposed of via wastewater.

Any unused veterinary medicinal product or waste materials derived from such veterinary medicinal product should be disposed of in accordance with local requirements.

The veterinary medicinal product should not enter water courses as selamectin may be dangerous for fish and other aquatic organisms.

Ask your veterinary surgeon or pharmacist how to dispose of medicines no longer required. These measures should help to protect the environment.

#### **13. CLASSIFICATION OF VETERINARY MEDICINAL PRODUCTS**

Veterinary medicinal product subject to prescription.

#### **14. MARKETING AUTHORISATION NUMBERS AND PACK SIZES**

Vm 01656/5058

Vm 01656/5059

Vm 01656/5060

Vm 01656/5061

Vm 01656/5062

Translucent polypropylene unit-dose pipette with polyethylene or polyoxymethylene or polypropylene closure with spike packaged into a laminated triplex bag composed of polyester, aluminium and polyethylene.

1 ml pipette containing 0.25 ml of solution

1 ml pipette containing 0.5 ml of solution

3 ml pipette containing 1.0 ml of solution

6 ml pipette containing 2.0 ml of solution

6 ml pipette containing 3.0 ml of solution

Pack sizes:

Cardboard box containing 1, 3, 6 or 15 pipettes.

Not all pack sizes may be marketed.

## **15. DATE ON WHICH THE PACKAGE LEAFLET WAS LAST APPROVED**

August 2023

Find more product information by searching for the 'Product Information Database' or 'PID' on [www.gov.uk](http://www.gov.uk).

## **16. CONTACT DETAILS**

Marketing authorisation holder:  
KRKA, d.d., Novo mesto  
Šmarješka cesta 6  
8501 Novo mesto  
Slovenia

Manufacturer responsible for batch release:  
KRKA, d.d., Novo mesto, Šmarješka cesta 6, 8501 Novo mesto, Slovenia  
TAD Pharma GmbH, Heinz-Lohmann-Straße 5, 27472 Cuxhaven, Germany

Local representatives and contact details to report suspected adverse reactions:  
KRKA UK Ltd  
United Kingdom  
Tel: 02071 646 156  
[info.uk@krka.biz](mailto:info.uk@krka.biz)

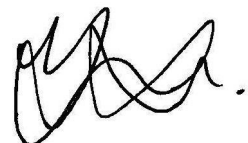
For any information about this veterinary medicinal product, please contact the local representative of the marketing authorisation holder.

## **17. OTHER INFORMATION**

**POM-V**

Veterinary medicinal product subject to prescription.

For animal treatment only.



Approved: 13 February 2024