

## **SUMMARY OF PRODUCT CHARACTERISTICS**

### **1. NAME OF THE VETERINARY MEDICINAL PRODUCT**

Fleanil Duo 268 mg / 241.2 mg spot-on solution for large dogs

### **2. QUALITATIVE AND QUANTITATIVE COMPOSITION**

Each pipette of 2.68 ml contains:

#### **Active substances:**

Fipronil .....268 mg  
(S)-methoprene.....241.2 mg

#### **Excipients:**

Butylhydroxyanisole (E320) .....0.54 mg  
Butylhydroxytoluene (E321).....0.27 mg

For the full list of excipients, see section 6.1.

### **3. PHARMACEUTICAL FORM**

Spot-on solution.

A clear, yellow solution

### **4. CLINICAL PARTICULARS**

#### **4.1 Target species**

Dogs.

#### **4.2 Indications for use, specifying the target species**

For the treatment of dogs weighing 20 to 40 kg bodyweight:

To be used against infestations with fleas, alone or in association with ticks and/or biting lice.

- Treatment of flea infestations (*Ctenocephalides* spp.). Insecticidal efficacy against new infestations with adult fleas persists for 8 weeks. Prevention of the multiplication of fleas by inhibiting of the development of eggs (ovicidal activity) and larvae and pupae (larvicidal activity) originating from eggs laid by adult fleas for eight weeks after application.
- Treatment of tick infestations (*Ixodes ricinus*, *Dermacentor variabilis*, *Dermacentor reticulatus*, *Rhipicephalus sanguineus*). The product has a persistent acaricidal efficacy for up to 4 weeks against ticks.
- Treatment of infestations with biting lice (*Trichodectes canis*).

### **4.3 Contraindications**

In the absence of available data, the product should not be used on puppies less than 8 weeks old.

Do not use on sick (e.g. systemic diseases, fever) or convalescent animals.

Do not use in rabbits, as adverse reactions with even mortality could occur. In absence of studies, the use of the product is not recommended in non-target species. This product is specifically developed for dogs. Do not use in cats or ferrets, as this could lead to overdosing.

Do not use in known cases of hypersensitivity to the active substance or to any of the excipients.

### **4.4 Special warnings for each target species**

Bathing/immersion in water within 2 days after application of the product and more frequent bathing than once a week should be avoided, as no study has been performed to investigate how this affects the efficacy of the product. Emollient shampoos can be used prior to treatment, but reduce the duration of protection against fleas to approximately 5 weeks when used weekly after application of the product. Weekly bathing with a 2% chlorhexidine medicated shampoo did not affect efficacy against fleas during a 6 week long study.

Dogs should not be allowed to swim in watercourses for 2 days after application (see section 6.6).

There may be an attachment of a few ticks. For this reason transmission of infectious diseases cannot be completely excluded if conditions are unfavorable.

Fleas from pets often infest the animal's basket, bedding and regular resting areas such as carpets and soft furnishings which should be treated, in case of massive infestation and at the beginning of the control measures, with a suitable insecticide and vacuumed regularly.

For optimal control of flea infestation in multi-pet household, all dogs and cats in the house should be treated with a suitable insecticide.

### **4.5 Special precautions for use**

#### (i) Special precautions for use in animals

Avoid contact with the animal's eyes.

It is important to make sure that the product is applied to an area where the animal cannot lick it off and to make sure that animals do not lick each other following treatment.

#### (ii) Special precautions to be taken by the person administering the veterinary medicinal product to animals

Keep pipettes in original packaging and dispose of used pipettes immediately. This product can cause mucous membrane, skin and eye irritation. Therefore, contact of the product with mouth, skin and eyes should be avoided. In case of

accidental eye contact, immediately and thoroughly rinse the eyes with clean water. If eye irritation persists seek medical advice and show the package leaflet or the label to the physician. If contact with the skin occurs, wash hands with soap and water.

People with a known hypersensitivity (allergy) to Fipronil, (S)-Methoprene, alcohol or excipients (6.1) should avoid contact with the veterinary medicinal product.

Avoid contents coming into contact with the fingers. If this occurs, wash hands with soap and water.

Wash hands after use. Do not smoke, drink or eat during application.

Ingestion of the product is harmful. Prevent children getting access to the pipettes and discard the used pipettes immediately after applying the product. In case of accidental ingestion of product, seek medical advice immediately.

Treated animals should not be handled until the application site is dry, and children should not be allowed to play with treated animals until the application site is dry. It is therefore recommended that animals are not treated during the day, but should be treated during the early evening, and that recently treated animals are not allowed to sleep with owners, especially children.

### **(iii) Other precautions**

Fipronil may adversely affect aquatic organisms. Dogs should not be allowed to swim in watercourses for 2 days after application.

The alcohol carrier may have adverse effect on painted, varnished or other household surfaces or furnishings.

This product is flammable. Keep away from heat, sparks, open flame or other sources of ignition.

## **4.6 Adverse reactions (frequency and seriousness)**

Among the very rare suspected adverse reactions, transient skin reactions on the application site (skin discoloration, local hair loss, itching, redness) and general itching or hair loss have been reported after use. Excessive salivation, reversible nervous signs (increased sensitivity to stimulation, depression, other nervous signs), vomiting or respiratory symptoms have also been observed after use.

The frequency of adverse reactions is defined using the following convention:

- very rare (less than 1 animal in 10,000 animals treated, including isolated reports).

If licking occurs, a brief period of excessive salivation may be observed due mainly to the nature of the carrier.

Do not overdose.

## **4.7 Use during pregnancy, lactation or lay**

The product can be used during pregnancy and lactation.

#### 4.8 Interaction with other medicinal products and other forms of interaction

Do not use simultaneously with other flea products which are applied directly on to the animal.

#### 4.9 Amounts to be administered and administration route

Animals should be weighed accurately prior to treatment.

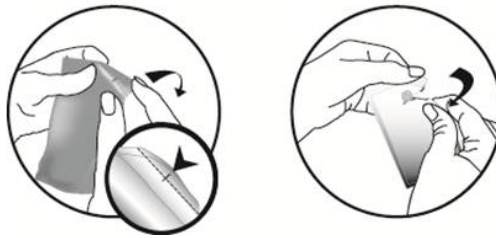
Dosage: One pipette of 2.68 ml per dog weighing over 20 kg and up to 40 kg, corresponding to a minimum recommended dose of 6.7 mg/kg for Fipronil and 6 mg/kg for (S)-Methoprene.

In the absence of safety studies the minimum treatment interval is 4 weeks.

Route of administration: External use only, spot-on use.  
Only remove pipette from sachet immediately prior to use.

Method of Administration:

Remove the pipette from the outer sachet using scissors or fold along diagonal line to expose nick; tear back at nick.



Hold the pipette upright. Tap the narrow part of the pipette to ensure the contents remain within the main body of the pipette. Twist or snap back the tip.



Part the coat on the back of the animal at the base of the neck in front of the shoulder blades until the skin is visible. Place the tip of the pipette on the skin and squeeze the pipette several times to empty its contents completely and directly onto the skin in one spot.



Temporary changes to the coat (clumped/greasy hair) may be noted at the application site.

#### **4.10 Overdose (symptoms, emergency procedures, antidotes), if necessary**

No adverse effects were observed in target animal safety studies in 8 week-old puppies, growing dogs and dogs weighing about 2 kg treated once at five times the recommended dose. The risk of experiencing adverse effects (see section 4.6) may however increase when overdosing, so animals should always be treated with the correct pipette size according to bodyweight.

#### **4.11 Withdrawal period(s)**

Not applicable.

### **5. PHARMACOLOGICAL PROPERTIES**

Pharmacotherapeutic group: Ectoparasiticides for topical use, fipronil combinations.  
ATCvet code: QP53AX65

#### **5.1 Pharmacodynamic properties**

**Fipronil** is an insecticide and acaricide belonging to the phenylpyrazole family. It acts by interacting with ligand-gated chloride channels, in particular those gated by the neurotransmitter gamma-aminobutyric acid (GABA), thereby blocking pre- and post-synaptic transfer of chloride ions across cell membranes. This results in uncontrolled activity of the central nervous system and death of insects or acarines. Fipronil kills fleas within 24 hours and ticks (*Dermacentor reticulatus*, *Dermacentor variabilis*, *Rhipicephalus sanguineus*, *Ixodes scapularis*, *Ixodes ricinus*, *Haemaphysalis longicornis*, *Haemaphysalis flava*, *Haemaphysalis campanulata*) and lice within 48 hours post-exposure.

**(S)-Methoprene** is an insect growth regulator (IGR) of the class of compounds known as juvenile hormone analogues that inhibit the development of immature stages of insects. This compound mimics the action of juvenile hormone and causes impaired development and death of the developing stages of fleas. The on-animal

ovicidal activity of (S)-Methoprene results from either direct penetration of the eggshell of newly laid eggs or from absorption through the cuticle of the adult fleas. (S)-Methoprene is also effective in preventing flea larvae and pupae from developing, which prevents contamination of the environment of treated animals with the immature stages of fleas.

## 5.2 Pharmacokinetic particulars

Studies of metabolism of Fipronil have demonstrated that the major metabolite is the sulfone derivative of Fipronil.

(S)-Methoprene is extensively degraded into carbon dioxide and acetate that are subsequently incorporated into endogenous materials.

The pharmacokinetic profiles after topical application of Fipronil and (S)-Methoprene in combination were studied in dogs in comparison to intravenous dosing of Fipronil or (S)-Methoprene alone. This established absorption and other pharmacokinetic parameters. The topical application resulted in low systemic absorption of Fipronil (11%) with a mean maximum concentration ( $C_{max}$ ) of approximately 35 ng/ml Fipronil and 55 ng/ml of fipronil sulfone in plasma. Peak Fipronil plasma concentrations are slowly attained (mean  $t_{max}$  approximately 101 h), and decline slowly (mean terminal half-life approximately 154 h, highest values are observed for males). Fipronil is extensively metabolised to fipronil sulfone after topical administration.

Plasma concentrations of (S)-Methoprene were below the limit of quantitation (20 ng/ml) in dogs after topical application.

Both (S)-Methoprene and Fipronil, together with its major metabolite, are well-distributed in the haircoat of a dog within one day after application. The concentrations of Fipronil, fipronil sulfone and (S)-Methoprene in the hair coat decrease with time and are detectable for at least 60 days after dosing. Parasites are killed through contact rather than systemic exposure.

No pharmacological interaction between Fipronil and (S)-Methoprene was noted.

## 6. PHARMACEUTICAL PARTICULARS

### 6.1 List of excipients

Butylhydroxyanisole (E320)  
Butylhydroxytoluene (E321)  
Ethanol anhydrous  
Polysorbate 80  
Povidone K17  
Diethylene glycol monoethyl ether

### 6.2 Major incompatibilities

None known.

### **6.3 Shelf-life**

Shelf-life of the veterinary medicinal product as packaged for sale: 2 years

### **6.4 Special precautions for storage**

Store in the original package in order to protect from light and moisture.  
This veterinary medicinal product does not require any special temperature storage conditions.

### **6.5 Nature and composition of immediate packaging**

2.68 ml pipette, moulded from a film composed of 3 layers: a polypropylene/COC/polypropylene, solvent free lacquer laminate and a copolymer of polyethylene/EVOH/polyethylene. The pipettes are sealed within a child resistant 4-ply foil sachet composed of LDPE/nylon/aluminium foil/polyester film and presented in an outer box.

Pipettes are presented in boxes containing 1, 2, 3, 4 or 6 pipettes. Each pipette is individually sealed in a foil sachet.

Not all pack sizes may be marketed.

### **6.6 Special precautions for the disposal of unused veterinary medicinal product or waste materials derived from the use of such products**

Any unused veterinary medicinal product or waste materials derived from such veterinary medicinal product should be disposed of in accordance with local requirements.

Fipronil and (S)-Methoprene may adversely affect aquatic organisms. Do not contaminate ponds, waterways or ditches with the product or empty containers.

## **7. MARKETING AUTHORISATION HOLDER**

Norbrook Laboratories Limited  
Station Works  
Camlough Road  
Newry  
Co. Down  
BT35 6JP  
Northern Ireland

## **8. MARKETING AUTHORISATION NUMBER**

Vm 02000/4415

**9. DATE OF FIRST AUTHORISATION**

24 April 2017

**10. DATE OF REVISION OF THE TEXT**

July 2021

Approved: 16/07/21

A handwritten signature in black ink that reads "D. Austin". The signature is written in a cursive style with a horizontal line extending to the right from the end of the name.