

**PARTICULARS TO APPEAR ON THE OUTER PACKAGE**

**BOX**

**1. NAME OF THE VETERINARY MEDICINAL PRODUCT**

RSPCA FleaAway 67 mg spot-on solution for small dogs  
Fipronil

**2. STATEMENT OF ACTIVE AND OTHER SUBSTANCES**

1 treatment (0.67 ml) contains:

Fipronil        67 mg

**3. PHARMACEUTICAL FORM**

Spot-on solution

**4. PACKAGE SIZE**

1 treatment  
3 treatments  
6 treatments

**5. TARGET SPECIES**

Dogs (2-10 kg)

**6. INDICATION(S)**

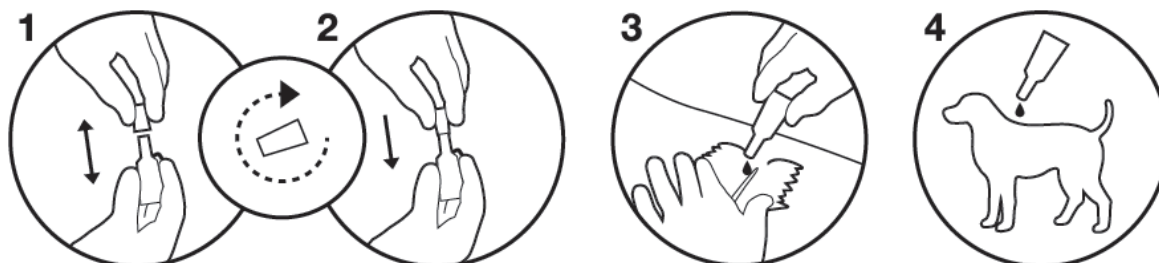
- Kills fleas, ticks and lice
- Protects for up to 8 weeks against fleas and 3 weeks against ticks

## 7. METHOD AND ROUTE(S) OF ADMINISTRATION

For spot-on use. Single dose pipette.

Read the package leaflet carefully for how to administer RSPCA FleaAway.

Administer 1 treatment of 0.67 ml per dog weighing over 2 kg and up to 10 kg bodyweight by topical application to the skin as follows:



## 8. WITHDRAWAL PERIOD

## 9. SPECIAL WARNING(S), IF NECESSARY

Read the package leaflet before use for full instructions and all warnings.

Prevent children getting access to the pipettes.

Keep in outer packaging and dispose of empty tubes immediately.

It is important that the user warnings are read before each use. Ensure that the package leaflet is kept in the outer carton.

## 10. EXPIRY DATE

EXP:

## 11. SPECIAL STORAGE CONDITIONS

Store in the original container in order to protect from light and moisture.

The product should be maintained at room temperature (above 14°C) for approximately one hour prior to administration.

## 12. SPECIAL PRECAUTIONS FOR THE DISPOSAL OF UNUSED PRODUCTS OR WASTE MATERIALS, IF ANY

Disposal: read the package leaflet.

Fipronil may adversely affect aquatic organisms. Do not contaminate ponds, waterways or ditches with the product or empty container.

**13. THE WORDS “FOR ANIMAL TREATMENT ONLY” AND CONDITIONS OR RESTRICTIONS REGARDING SUPPLY AND USE, if applicable**

For animal treatment only.

AVM-GSL

**14. THE WORDS “KEEP OUT OF THE SIGHT AND REACH OF CHILDREN”**

Keep out of the sight and reach of children.

**15. NAME AND ADDRESS OF THE MARKETING AUTHORISATION HOLDER**

KRKA, d.d., Novo Mesto  
Šmarješka Cesta 6  
8501 Novo Mesto  
Slovenia

Distributed in the UK by:  
RSPCA Trading Ltd  
Parkside  
Chart Way  
Horsham  
West Sussex  
RH12 1GY

[productsupport@rspca-services.org.uk](mailto:productsupport@rspca-services.org.uk)

RSPCA name and logo are trademarks of the RSPCA. RSPCA Trading Ltd will pay 100% of their profits from the sale of this product to the RSPCA. The RSPCA helps animals in England and Wales. Registered charity no. 219099. To find out more about the RSPCA, please look online.

**16. MARKETING AUTHORISATION NUMBER**

Vm 01656/4078

**17. MANUFACTURER'S BATCH NUMBER**

Lot:

**MINIMUM PARTICULARS TO APPEAR ON SMALL IMMEDIATE PACKAGING UNITS**

**LABEL**

**1. NAME OF THE VETERINARY MEDICINAL PRODUCT**

RSPCA FleaAway 67 mg spot-on solution for small dogs  
Fipronil

**2. QUANTITY OF THE ACTIVE SUBSTANCE(S)**

Fipronil 67 mg

**3. CONTENTS BY WEIGHT, BY VOLUME OR BY NUMBER OF DOSES**

1 treatment of 0.67 ml

**4. ROUTE(S) OF ADMINISTRATION**

Spot-on use.  
Dogs (2-10 kg)



**5. WITHDRAWAL PERIOD**

**6. BATCH NUMBER**

Lot:

**7. EXPIRY DATE**

EXP

## 8. THE WORDS “FOR ANIMAL TREATMENT ONLY”

For animal treatment only.

### **User warnings:**

Treated animals should not be handled or played with until the application site is dry. It is recommended that dogs are treated during the early evening. Treated dogs should not be allowed to sleep with owners, especially children.

This product can cause mucous membrane and eye irritation. Avoid getting the product on your skin, or in your mouth and eyes. Wash off any product immediately with soap and water if skin contact occurs.

If the product gets in your eyes, immediately and thoroughly flush the eyes with water. If irritation persists or the product is accidentally swallowed seek medical advice and show the leaflet/label to the doctor.

Do not smoke, drink or eat during application. Wash hands after use.

People who are allergic to fipronil or the other ingredients should avoid contact with the product.

**MINIMUM PARTICULARS TO APPEAR ON SMALL IMMEDIATE PACKAGING UNITS**

**PIPETTE**

**1. NAME OF THE VETERINARY MEDICINAL PRODUCT**

RSPCA FleaAway 67 mg  
Fipronil

**2. QUANTITY OF THE ACTIVE SUBSTANCE(S)**

Fipronil 67 mg

**3. CONTENTS BY WEIGHT, BY VOLUME OR BY NUMBER OF DOSES**

0.67 ml

**4. ROUTE(S) OF ADMINISTRATION**

**5. WITHDRAWAL PERIOD**

**6. BATCH NUMBER**

Lot:

**7. EXPIRY DATE**

EXP

## 8. THE WORDS “FOR ANIMAL TREATMENT ONLY”

RSPCA FleaAway  
for small, medium, large & extra large dogs

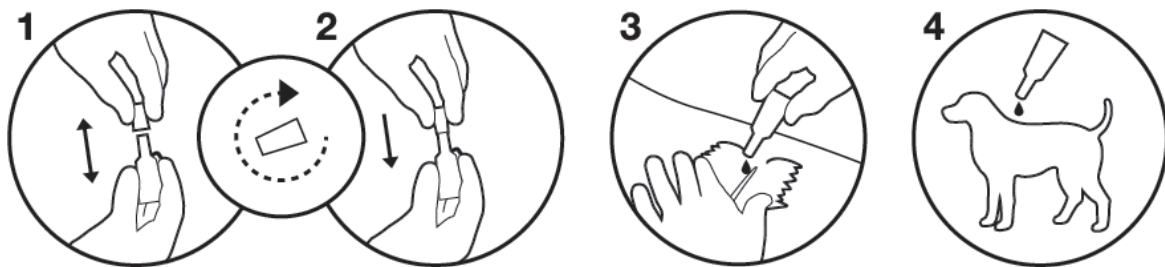
READ THIS INFORMATION CAREFULLY BEFORE EACH USE. KEEP THIS LEAFLET IN THE OUTER CARTON FOR FUTURE REFERENCE.

### What is RSPCA FleaAway for?

RSPCA FleaAway spot-on solution for dogs is for killing fleas, ticks and lice on dogs. The product is applied on the skin between the shoulder blades, with each treatment lasting for up to 8 weeks (fleas) and 3 weeks (ticks). Most lice are killed within 2 days.

### How do I use RSPCA FleaAway?

One tube should be given to each dog, applied to the skin as shown below. It is important that the correct tube is used for their weight, so weigh the dog before use.



1. Remove the tube from the foil bag. Hold in an upright position, twist and pull the cap off.
2. Turn the cap around and place the other end on the tube. Push and twist the cap to break the seal, then remove the cap.
3. Part the dog's hair between the shoulder blades.
4. Squeeze the tube and empty the contents directly onto the skin at one or two spots.

After treatment, you may notice a clumping of hair or greasiness at the application site.

Make sure the product is applied to the skin in an area where the dog cannot lick and ensure that dogs do not lick each other after treatment. If dogs do lick the product, it can cause them to salivate (drool) for a brief period of time.

In very rare cases, redness or discolouration of the skin, hair loss and itching may occur at the treatment site or on the dog in general. Excess salivation, reversible nervous signs (increased sensitivity to stimulation, depression, other nervous signs), vomiting or breathing problems have also been observed very rarely after use.

The frequency of adverse reactions is defined using the following convention:

- very common (more than 1 in 10 animals treated displaying adverse reaction(s))

- common (more than 1 but less than 10 animals in 100 animals treated)
- uncommon (more than 1 but less than 10 animals in 1,000 animals treated)
- rare (more than 1 but less than 10 animals in 10,000 animals treated)
- very rare (less than 1 animals in 10,000 animals treated, including isolated reports).

Bathing or swimming should be avoided for 2 days after treatment. If weekly contact with water for one minute occurs, the treatment may only last for up to 7 weeks against fleas.

If ticks are present when the dog is treated, all ticks may not be killed within 48 hours. This product will not stop ticks from attaching to your dog. If they attach after your dog has been treated, they will be killed within 24-48 hours. Dead ticks will often fall off your dog, but can be removed with a gentle pull.

### What size of RSPCA FleaAway should be used?

Weigh the dog accurately before using the product to ensure the correct tube is used.

Dog weight (kg)	RSPCA FleaAway	Treatment	Contents		
			Active substance	Other ingredients	
			Amount of fipronil	Butylhydroxyanisole (E320)	Butylhydroxytoluene (E321)
Over 2 – 10	67 mg for small dogs	1 tube of 0.67 ml	67 mg	0.134 mg	0.067 mg
Over 10 – 20	134 mg for medium dogs	1 tube of 1.34 ml	134 mg	0.268 mg	0.134 mg
Over 20 – 40	268 mg for large dogs	1 tube of 2.68 ml	268 mg	0.536 mg	0.268 mg
Over 40 – 60	402 mg for extra large dogs	1 tube of 4.02 ml	402 mg	0.804 mg	0.402 mg
Over 60	402 mg for extra large dogs AND the appropriate smaller tube	1 tube of 4.02 ml AND the appropriate smaller tube	402 mg AND the appropriate smaller tube	0.804 mg AND the appropriate smaller tube	0.402 mg AND the appropriate smaller tube

### How often should I use RSPCA FleaAway?

Fleas are killed for up to 8 weeks and ticks for up to 3 weeks. The minimum treatment interval is 4 weeks.

### Should I use anything else with RSPCA FleaAway?

All animals in the house should be treated with a suitable flea treatment. Fleas from cats and dogs can infest the animal's bedding or other areas in the house where they

often go. Regular vacuuming and the use of a suitable household spray may be needed if there is a heavy infestation.

### **Animal safety with RSPCA FleaAway**

Do not use on puppies less than 2 months old or weighing less than 2 kg.

Do not use on rabbits as adverse reactions, or even death, could occur.

Do not use on sick or convalescent animals.

Do not use if your dog is known to be allergic to the active substance (fipronil) or to any of the other ingredients (excipients). Do not apply on wounds or damaged skin. Do not use in cats, as this may lead to overdosing.

Avoid contact with your dog's eyes. If this occurs, immediately and thoroughly flush with water. If necessary, speak to your veterinary surgeon for advice.

No specific studies have been performed in pregnant or nursing dogs. Therefore, speak to your veterinary surgeon before using RSPCA FleaAway in these situations. Speak to your veterinary surgeon if you notice any adverse effects following the use of RSPCA FleaAway.

### **User safety with RSPCA FleaAway**

#### **PLEASE READ THESE WARNINGS BEFORE EACH USE**

Treated animals should not be handled or played with until the application site is dry. It is recommended that dogs are treated during the early evening. Treated dogs should not be allowed to sleep with owners, especially children.

This product can cause mucous membrane and eye irritation. Avoid getting the product on your skin, or in your mouth and eyes.

Wash off any product immediately with soap and water if skin contact occurs.

If the product gets in your eyes, immediately and thoroughly flush the eyes with water. If eye irritation persists seek medical advice and show the package leaflet or the label to the doctor.

Do not smoke, drink or eat during application. Wash hands after use.

People with a known hypersensitivity to fipronil or the other ingredients should avoid contact with the product.

Ingestion of the product is harmful. Prevent children getting access to the pipettes.

Keep pipettes in the original packaging and discard the used pipettes immediately after applying the product. If any of the product is swallowed, seek medical advice immediately.

### **General precautions for RSPCA FleaAway**

Keep out of the sight and reach of children.

For animal treatment only.

For external use only.

Do not use after the expiry date.

### **How should RSPCA FleaAway be stored?**

Store in the original carton to protect from light and moisture.

Keep the product at room temperature (above 14°C) for approximately one hour before treating your dog.

### **How should RSPCA FleaAway be disposed?**

Fipronil may adversely affect aquatic organisms. Dogs should not be allowed to swim in water courses for 2 days after treatment. Do not contaminate ponds, waterways or ditches with the product or empty container. Dispose of empty packaging and any remaining product in the household refuse.

Available in cartons containing 1, 3 or 6 treatments. Not all pack sizes may be marketed.

**AVM-GSL**

RSPCA FleaAway 67 mg spot-on solution for small dogs (Vm 01656/4078)  
RSPCA FleaAway 134 mg spot-on solution for medium dogs (Vm 01656/4079)  
RSPCA FleaAway 268 mg spot-on solution for large dogs (Vm 01656/4080)  
RSPCA FleaAway 402 mg spot-on solution for extra large dogs (Vm 01656/4081)

Manufacturer responsible for batch release:

Krka d.d., Novo mesto, Šmarješka cesta 6, 8501 Novo mesto, Slovenia

For further information on this product, please contact the distributor:

RSPCA Trading Ltd, Parkside, Chart Way, Horsham, West Sussex, RH12 1GY

[productsupport@rspca-services.org.uk](mailto:productsupport@rspca-services.org.uk)

RSPCA name and logo are trademarks of the RSPCA. RSPCA Trading Ltd will pay 100% of their profits from the sale of this product to the RSPCA.

The RSPCA helps animals in England and Wales. Registered charity no. 219099.

To find out more about the RSPCA, please look online.

Date on which the package leaflet was last approved:

Approved 17 December 2025

*Gavin Hall*