

PARTICULARS TO APPEAR ON THE OUTER PACKAGE

{BOX}

1. NAME OF THE VETERINARY MEDICINAL PRODUCT

Dadektin Combo 402 mg/ 361.8 mg spot-on solution for extra large dogs
Fipronil/ S-Methoprene

2. STATEMENT OF ACTIVE SUBSTANCES

Each 4.02 ml pipette contains:

Active substance:

Fipronil	402 mg
S-Methoprene	361.8 mg

3. PHARMACEUTICAL FORM

Spot-on solution.

4. PACKAGE SIZE

1 x 4.02 ml
3 x 4.02 ml
6 x 4.02 ml

5. TARGET SPECIES

Dogs >40 kg

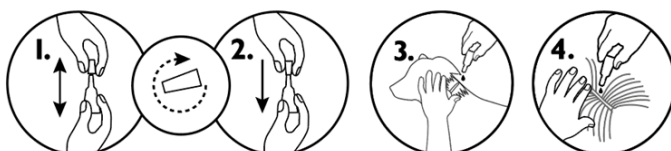
6. INDICATION(S)

In dogs weighing 40 to 60 kg bodyweight: it kills fleas (*Ctenocephalides* spp.) and prevents the development of eggs, larvae and pupae from exposed fleas for up to 8 weeks; it kills ticks (*Ixodes ricinus*, *Dermacentor variabilis*, *Dermacentor reticulatus*, *Rhipicephalus sanguineus*) for up to 4 weeks; it kills biting lice (*Trichodectes canis*).

7. METHOD AND ROUTE(S) OF ADMINISTRATION

Read the package leaflet before use.

For external use only, topical spot-on application to the skin. One pipette of 4.02 ml per dog weighing 40-60 kg.



Temporary changes to the coat (clumped/greasy hair) may be noted at the application site.

In the absence of safety studies the minimum treatment interval is 4 weeks.

8. WITHDRAWAL PERIOD(S)

9. SPECIAL WARNING(S), IF NECESSARY

Read the package leaflet before use.

For external use only, do not administer orally.

Use during pregnancy and lactation

The product can be used during pregnancy and lactation.

Precautions

Single ticks may be attached after treatment and the transmission of infectious disease cannot be completely excluded in unfavourable conditions.

Avoid contact with the eyes of the animal. In such case, rinse the eyes immediately with plenty of water.

Do not apply the product on wounds or skin lesions.

Apply the product directly onto an area of dry skin where the animal cannot lick it off and prevent licking among animals following treatment.

Avoid bathing/immersion in water within 2 days after application of the product and more frequent bathing than once a week should be avoided. Emollient shampoos can be used prior to treatment. Their weekly use after the treatment reduces the duration of protection against fleas to approximately 5 weeks. Weekly bathing with a 2% chlorhexidine medicated shampoo did not affect efficacy against fleas during 6 weeks.

Animals should be weighed accurately prior to treatment.

Contraindications

In the absence of available data, the product should not be used on puppies less than 8 weeks old and/or weighing less than 2 kg.

Do not use on sick (e.g. systemic diseases, fever) or convalescent animals.

Do not use in rabbits due to a risk of adverse reactions or even death.

This product is specifically developed for dogs. Do not use in any other non-target species.

Do not use in case of hypersensitivity (allergy) to Fipronil or (S)-methoprene or to any other ingredients.

User Warnings

This product can cause mucous membrane, skin and eye irritation. Therefore, contact of the product with mouth, skin and eyes should be avoided.

People with a known hypersensitivity (allergy) to fipronil, (s)-methoprene, polysorbates, alcohol, or additives E320 or E321, should avoid contact with the product. Avoid contents coming into contact with the fingers. If this occurs, wash

hands with soap and water. After accidental eye contact, rinse carefully in clean water. If the product is accidentally swallowed, seek medical advice immediately and show the package leaflet or the label to the physician.

Wash hands after use. Do not smoke, drink or eat during application.

Treated animals should not be handled until the application site is dry, and children should not be allowed to play with treated animals until the application site is dry. It is therefore recommended that animals are not treated during the day, but should be treated during the early evening, and that recently treated animals are not allowed to sleep with owners, especially children.

Keep pipettes in original packaging until ready to use, and dispose of used pipettes immediately.

10. EXPIRY DATE

EXP

11. SPECIAL STORAGE CONDITIONS

Store below 30 °C.

Store in the original package in order to protect from light and moisture.

12. SPECIAL PRECAUTIONS FOR THE DISPOSAL OF UNUSED PRODUCTS OR WASTE MATERIALS, IF ANY

Fipronil and s-methoprene may adversely affect aquatic organisms. Dispose of empty packaging and any remaining product in the household refuse.

13. THE WORDS “FOR ANIMAL TREATMENT ONLY” AND CONDITIONS OR RESTRICTIONS REGARDING SUPPLY AND USE, IF APPLICABLE

For animal treatment only.
AVM-GSL

14. THE WORDS “KEEP OUT OF THE SIGHT AND REACH OF CHILDREN”

Keep out of the sight and reach of children.

15. NAME AND ADDRESS OF THE MARKETING AUTHORISATION HOLDER

KRKA, d.d., Novo mesto
Šmarješka cesta 6
8501 Novo mesto
Slovenia

16. MARKETING AUTHORISATION NUMBER(S)

Vm 01656/5048

17. MANUFACTURER'S BATCH NUMBER
--

Lot

MINIMUM PARTICULARS TO APPEAR ON SMALL IMMEDIATE PACKAGING UNITS

{ BAG }

1. NAME OF THE VETERINARY MEDICINAL PRODUCT

Dadektin Combo 402 mg/ 361.8 mg spot-on solution for extra large dogs
Fipronil/ S-Methoprene

2. QUANTITY OF THE ACTIVE SUBSTANCE(S)

Each pipette contains 402 mg Fipronil, 361.8 mg S-methoprene

3. CONTENTS BY WEIGHT, BY VOLUME OR BY NUMBER OF DOSES

1 x 4.02 ml

4. ROUTE(S) OF ADMINISTRATION

Spot-on use.
Dogs >40 kg (dogs weighing over 40 kg)



5. WITHDRAWAL PERIOD(S)

6. BATCH NUMBER

Lot:

7. EXPIRY DATE

EXP


8. THE WORDS "FOR ANIMAL TREATMENT ONLY"

For animal treatment only.

MINIMUM PARTICULARS TO APPEAR ON BLISTERS OR STRIPS

{ PIPETTE }

1. NAME OF THE VETERINARY MEDICINAL PRODUCT

Dadektin Combo 402 mg/ 361.8 mg 
Fipronil/ S-Methoprene

2. NAME OF THE MARKETING AUTHORISATION HOLDER

KRKA

3. EXPIRY DATE

EXP

4. BATCH NUMBER

Lot

5. THE WORDS “FOR ANIMAL TREATMENT ONLY”

For animal treatment only.

PACKAGE LEAFLET:

Dadektin Combo 67 mg/ 60.3 mg spot-on solution for small dogs
Dadektin Combo 134 mg/ 120.6 mg spot-on solution for medium dogs
Dadektin Combo 268 mg/ 241.2 mg spot-on solution for large dogs
Dadektin Combo 402 mg/ 361.8 mg spot-on solution for extra large dogs

1. NAME AND ADDRESS OF THE MARKETING AUTHORISATION HOLDER AND OF THE MANUFACTURING AUTHORISATION HOLDER RESPONSIBLE FOR BATCH RELEASE, IF DIFFERENT

Marketing authorisation holder and manufacturer responsible for batch release :
KRKA, d.d., Novo mesto, Šmarješka cesta 6, 8501 Novo mesto, Slovenia

2. NAME OF THE VETERINARY MEDICINAL PRODUCT

Dadektin Combo 67 mg/ 60.3 mg spot-on solution for small dogs
Dadektin Combo 134 mg/ 120.6 mg spot-on solution for medium dogs
Dadektin Combo 268 mg/ 241.2 mg spot-on solution for large dogs
Dadektin Combo 402 mg/ 361.8 mg spot-on solution for extra large dogs

Fipronil/S-Methoprene

3. STATEMENT OF THE ACTIVE SUBSTANCE(S) AND OTHER INGREDIENT(S)

Each 0.67 ml pipette contains:

Active substance:

Fipronil	67 mg
S-Methoprene	60.3 mg

Excipients:

Butylhydroxyanisole (E320)	0.134 mg
Butylhydroxytoluene (E321)	0.067 mg

Each 1.34 ml pipette contains:

Active substance:

Fipronil	134 mg
S-Methoprene	120.6 mg

Excipients:

Butylhydroxyanisole (E320)	0.27 mg
Butylhydroxytoluene (E321)	0.13 mg

Each 2.68 ml pipette contains:

Active substance:

Fipronil	268 mg
S-Methoprene	241.2 mg

Excipients:

Butylhydroxyanisole (E320)	0.54 mg
Butylhydroxytoluene (E321)	0.27 mg

Each 4.02 ml pipette contains:

Active substance:

Fipronil	402 mg
S-Methoprene	361.8 mg

Excipients:

Butylhydroxyanisole (E320)	0.80 mg
Butylhydroxytoluene (E321)	0.40 mg

Clear yellow solution.

4. INDICATION(S)

To be used against infestations with fleas, alone or in association with ticks and/or biting lice.

Treatment of flea infestations (*Ctenocephalides* spp.). Insecticidal efficacy against new infestations with adult fleas persists for 8 weeks. Prevention of the multiplication of fleas by inhibiting the development of eggs (ovicidal activity) and larvae and pupae (larvicidal activity) originating from eggs laid by adult fleas for eight weeks after application.

Treatment of tick infestations (*Ixodes ricinus*, *Dermacentor variabilis*, *Dermacentor reticulatus*, *Rhipicephalus sanguineus*). The product has persistent acaricidal efficacy for up to 4 weeks against ticks.

Treatment of infestations with biting lice (*Trichodectes canis*).

5. CONTRAINDICATIONS

In the absence of available data, the product should not be used on puppies less than 8 weeks old and/or weighing less than 2 kg.

Do not use on sick (e.g. systemic diseases, fever) or convalescent animals.

Do not use in case of hypersensitivity (allergy) to Fipronil or (S)-methoprene or to any other ingredients.

Do not apply on wounds or damaged skin.

In the absence of studies, the use of the product is not recommended in non-target species.

Do not use in rabbits, as adverse reactions with even mortality could occur.

6. ADVERSE REACTIONS

Among the very rare suspected adverse reactions, transient skin reactions on the application site (skin discoloration, local hair loss, itching, redness) and general itching or hair loss have been reported after use. Excessive salivation, reversible

nervous signs (increased sensitivity to stimulation, depression, other nervous signs), vomiting or respiratory symptoms have also been observed after use.

In the case of licking the administration site, a brief period of excessive salivation may be observed due mainly to the nature of the carrier.

Do not overdose.

If you notice any side effects, even those not already listed in this package leaflet or you think that the medicine has not worked, please inform your veterinary surgeon.

7. TARGET SPECIES

Dogs

8. DOSAGE FOR EACH SPECIES, ROUTE(S) AND METHOD OF ADMINISTRATION

Route of administration and dosage:

External use only.

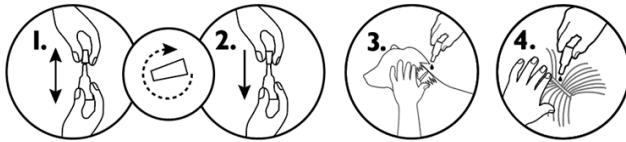
Administer by topical application to the skin according to the bodyweight as follows:

Dogs	Number of pipettes	Pipette volume	Potency (fipronil + (S)-methoprene)
over 2 kg and up to 10 kg	1 pipette	0.67 ml	67 mg + 60.3 mg
over 10 kg and up to 20 kg	1 pipette	1.34 ml	134 mg + 120.6 mg
over 20 kg and up to 40 kg	1 pipette	2.68 ml	268 mg + 241.2 mg
over 40 kg and up to 60 kg	1 pipette	4.02 ml	402 mg + 361.8 mg

This corresponds to a minimum recommended dose of 6.7 mg/kg for fipronil and 6 mg/kg for (S)-methoprene, by topical application to the skin.

Method of administration:

1. Remove the pipette from its packaging. Hold the pipette in an upright position, twist and pull the cap off.
2. Turn the cap around and place the other end of the cap back on the pipette. Push and twist the cap to break the seal, then remove the cap from the pipette.
3. Apply to the skin at the base of the neck in front of the shoulder blades.
4. Part the coat until the skin is visible. Place the tip of the pipette onto the skin and squeeze the pipette several times to empty its contents completely and directly onto the skin in one spot.



Temporary changes to the coat (clumped/greasy hair) may be noted at the application site.

9. ADVICE ON CORRECT ADMINISTRATION

In the absence of safety studies, the minimum treatment interval is 4 weeks. Animals should be weighed accurately prior to treatment.

10. WITHDRAWAL PERIOD(S)

Not applicable.

11. SPECIAL STORAGE PRECAUTIONS

Keep out of the sight and reach of children.

Store below 30 °C.

Store in the original package in order to protect from light and moisture.

Do not use this veterinary medicinal product after the expiry date which is stated on the label after {EXP}. The expiry date refers to the last day of that month.

12. SPECIAL WARNING(S)

Special warnings for each target species:

Bathing/immersion in water within 2 days after application of the product and more frequent bathing than once a week should be avoided, as no study has been performed to investigate how this affects the efficacy of the product. Emollient shampoos can be used prior to treatment but reduce the duration of protection against fleas to approximately 5 weeks when used weekly after application of the product. Weekly bathing with a 2% chlorhexidine medicated shampoo did not affect efficacy against fleas during a 6 week-long study.

There may be an attachment of a few ticks. For this reason a transmission of infectious diseases cannot be completely excluded if conditions are unfavourable.

When treating infestations of parasites, all in-contact animals should be treated with an appropriate product at the same time. Fleas from pets often infest the animal's basket, bedding and regular resting areas such as carpets and soft furnishings which should be treated, in case of massive infestation and at the beginning of the control measures, with a suitable insecticide and vacuumed regularly.

Special precautions for use in animals:

Do not administer orally. Avoid contact with the animal's eyes. If the product is in contact with eyes, rinse immediately with plenty of water.

It is important to make sure that the product is applied to an area where the animal cannot lick it off and to make sure that animals do not lick each other following treatment. Do not apply the product on wounds or skin lesions.

User warnings:

This product can cause mucous membrane, skin and eye irritation. Therefore, contact of the product with mouth, skin and eyes should be avoided.

People with a known hypersensitivity (allergy) to fipronil, (s)-methoprene, polysorbates, alcohol, or additives E320 or E321, should avoid contact with the product. Avoid contents coming into contact with the fingers. If this occurs, wash hands with soap and water.

After accidental eye contact, rinse carefully in clean water.

If the product is accidentally swallowed, seek medical advice immediately and show the package leaflet or the label to the physician.

Wash hands after use.

Do not smoke, drink or eat during application.

Treated animals should not be handled until the application site is dry, and children should not be allowed to play with treated animals until the application site is dry. It is therefore recommended that animals are not treated during the day, but should be treated during the early evening, and that recently treated animals are not allowed to sleep with owners, especially children.

Keep pipettes in original packaging until ready to use, and dispose of used pipettes immediately.

Other precautions

Fipronil and S-methoprene may adversely affect aquatic organisms. Dogs should not be allowed to swim in watercourses for 2 days after application.

The alcohol carrier may have adverse effects on painted, varnished or other household surfaces or furnishings.

Pregnancy and lactation:

The product can be used during pregnancy and lactation.

Interaction with other medicinal products and other forms of interaction:

Do not use simultaneously with other flea products which are applied directly on to the animal.

Overdose (symptoms, emergency procedures, antidotes):

No adverse effects were observed in target animal safety studies in 8 week-old puppies, growing dogs and dogs weighing about 2 kg treated once at five times the recommended dose. The risk of experiencing adverse effects (see section 6) may however increase when overdosing, so animals should always be treated with the correct pipette size according to bodyweight.

13. SPECIAL PRECAUTIONS FOR THE DISPOSAL OF UNUSED PRODUCT OR WASTE MATERIALS, IF ANY

Fipronil and s-methoprene may adversely affect aquatic organisms. Dispose of empty packaging and any remaining product in the household refuse.

14. DATE ON WHICH THE PACKAGE LEAFLET WAS LAST APPROVED

September 2022

15. OTHER INFORMATION

White polypropylene single-dose pipette packaged in aluminium foil sachets.
Cardboard box containing 1, 3 or 6 pipettes.
Not all pack sizes may be marketed.

For any information about this veterinary medicinal product, please contact the local representative of the marketing authorisation holder.

Approved 30 September 2022

A handwritten signature in black ink, appearing to read "Hunter.", is positioned below the approval date. The signature is stylized and includes a vertical line to the left of the name.