

**PARTICULARS TO APPEAR ON THE OUTER PACKAGE**

{BOX}

**1. NAME OF THE VETERINARY MEDICINAL PRODUCT**

VetBox Combo 402 mg/ 361.8 mg Spot-on Solution

**2. STATEMENT OF ACTIVE SUBSTANCES**

**WHAT'S IN THIS PRODUCT?**

Each pipette contains 402 mg Fipronil, 361.8 mg S-methoprene

**3. PACKAGE SIZE**

1 x 4.02 ml pipette  
3 x 4.02 ml pipettes  
6 x 4.02 ml pipettes

**4. TARGET SPECIES**

Extra Large Dogs (>40 kg)



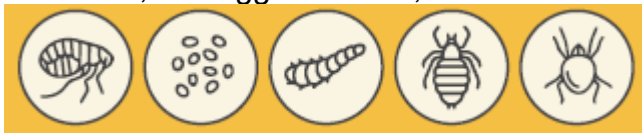
**5. INDICATION(S)**

**WHAT DOES THIS PRODUCT DO?**

Kills fleas (*Ctenocephalides spp.*) on treated dogs and prevents eggs laid by exposed fleas from developing for up to 8 weeks. Kills ticks (*Ixodes ricinus*, *Dermacentor variabilis*, *Dermacentor reticulatus*, *Rhipicephalus sanguineus*) on treated dogs for up to 4 weeks. Treats infestations with biting lice (*Trichodectes canis*).

**Flea & Tick Treatment**

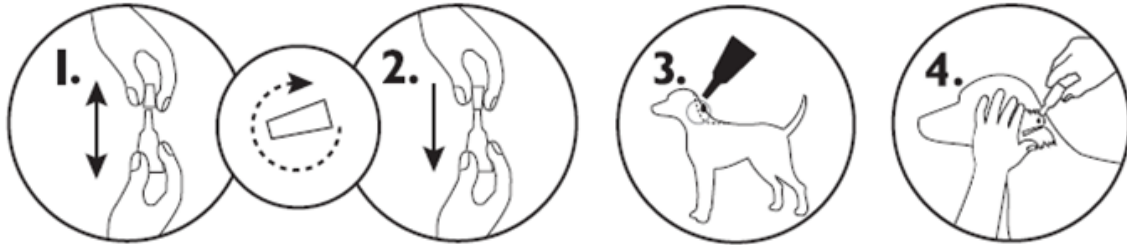
Kills fleas, flea eggs & larvae, ticks & lice



## 6. ROUTE(S) OF ADMINISTRATION

Spot-on solution.

How to apply this product:



1 x Treatment

### HOW DO I USE THIS PRODUCT?

**Before use, read the package leaflet for full instructions and all warnings, including user warnings.** Hold the pipette in an upright position, twist and pull the cap off. Turn the cap around and place the other end of the cap back on the pipette. Push and twist the cap to break the seal, then remove the cap from the pipette. Part the coat on the back of the animal at the base of the neck, in front of the shoulder blades until the skin is visible. Place the tip of the pipette onto the skin and squeeze the pipette several times to empty its contents completely and directly onto the skin in one spot. Do not reapply more often than at four weekly intervals. It is important to make sure that the product is applied to an area where the animal cannot lick it off and to make sure that animals do not lick each other following treatment.

## 7. WITHDRAWAL PERIOD

## 8. EXPIRY DATE

Exp. {mm/yyyy}

## 9. SPECIAL STORAGE PRECAUTIONS

### HOW SHOULD I STORE OF THE PRODUCT?

This veterinary medicinal product does not require any special temperature storage conditions. Store in the original package in order to protect from light and moisture.

## 10. THE WORDS “READ THE PACKAGE LEAFLET BEFORE USE”

Read the package leaflet before use.

**USER SAFETY-Please read before every use.**

This veterinary medicinal product can cause mucous membrane, skin and eye irritation. Therefore, contact of the veterinary medicinal product with mouth, skin and eyes should be avoided.

People with known hypersensitivity (allergy) to Fipronil, S-Methoprene or alcohol should avoid contact with the veterinary medicinal product. Avoid contents coming into contact with the fingers. If this occurs, wash hands with soap and water. After accidental ocular exposure the eye should be rinsed carefully in clean water. In case of accidental ingestion, seek medical advice immediately and show the package leaflet or the label to the physician.

Wash hands after use. Do not smoke, drink or eat during application.

Treated animals should not be handled until the application site is dry, and children should not be allowed to play with treated animals until the application site is dry. It is therefore recommended that animals are not treated during the day, but should be treated during the early evening, and that recently treated animals are not allowed to sleep with owners, especially children.

Keep pipettes in original packaging until ready to use.

As fipronil and S-methoprene may adversely affect aquatic organisms, dogs should not be allowed to swim in watercourses for 2 days after treatment.

**11. THE WORDS “FOR ANIMAL TREATMENT ONLY”**

For animal treatment only.

**12. THE WORDS “KEEP OUT OF THE SIGHT AND REACH OF CHILDREN”**

Keep out of the sight and reach of children.

**13. NAME OF THE MARKETING AUTHORISATION HOLDER**

KRKA, d.d., Novo mesto

**14. MARKETING AUTHORISATION NUMBER**

Vm 01656/4162

**15. BATCH NUMBER**

Lot {number}

**IS THIS PRODUCT SUITABLE FOR MY DOG?**

Only use VetBox Combo if your dog is aged 8 weeks or older, and weighs over 40 kg. Do not use if your dog is sick or recovering from an illness. Do not use if your dog has a hypersensitivity to fipronil or S-methoprene or the other ingredients. Do not apply on wounds or damaged skin. Do not use on cats. Do not use in rabbits, as adverse reactions including death, can occur.

**MINIMUM PARTICULARS TO APPEAR ON SMALL IMMEDIATE PACKAGING UNITS**

{ BAG }

**1. NAME OF THE VETERINARY MEDICINAL PRODUCT**

VetBox Combo



>40 kg

**2. QUANTITY OF THE ACTIVE SUBSTANCE(S)**

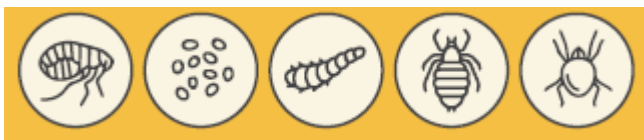
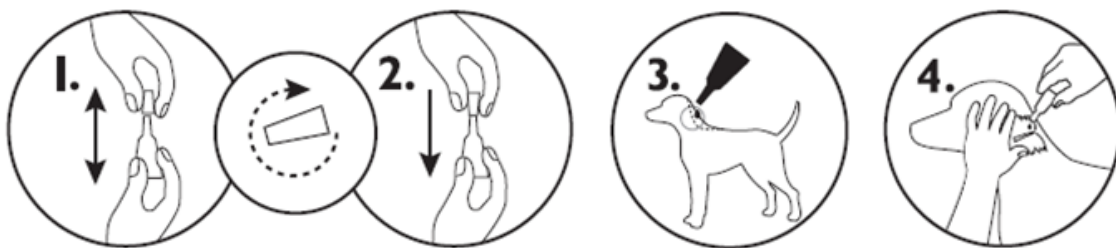
402 mg/ 361.8 mg  
Fipronil/S-methoprene

**3. BATCH NUMBER**

Lot

**4. EXPIRY DATE**

Exp. {mm/yyyy}



KRKA

**MINIMUM PARTICULARS TO APPEAR ON BLISTERS OR STRIPS**

{ PIPETTE }

**1. NAME OF THE VETERINARY MEDICINAL PRODUCT**

VetBox Combo



**2. QUANTITATIVE PARTICULARS OF THE ACTIVE SUBSTANCES**

>40 kg

**3. BATCH NUMBER**

Lot

**4. EXPIRY DATE**

Exp. {mm/yyyy}

## **PARTICULARS TO APPEAR ON THE PACKAGE LEAFLET:**

### **PACKAGE LEAFLET**

READ THIS INFORMATION CAREFULLY BEFORE EACH USE. KEEP THIS LEAFLET IN THE OUTER CARTON FOR FUTURE REFERENCE.

#### **1. Name of the veterinary medicinal product**

**VetBox Combo 67 mg/ 60.3 mg Spot-on Solution for Small Dogs**

**VetBox Combo 134 mg/ 120.6 mg Spot-on Solution for Medium Dogs**

**VetBox Combo 268 mg/ 241.2 mg Spot-on Solution for Large Dogs**

**VetBox Combo 402 mg/ 361.8 mg Spot-on Solution for Extra Large Dogs**

#### **2. Composition**

##### **What size of VetBox Combo should be used?**

Weigh the dog accurately before using the product to ensure the correct tube is used.

| Dog weight (kg) | VetBox Combo         | Treatment         | Contents           |                        |                            |                            |
|-----------------|----------------------|-------------------|--------------------|------------------------|----------------------------|----------------------------|
|                 |                      |                   | Active substance   |                        | Other ingredients          |                            |
|                 |                      |                   | Amount of fipronil | Amount of S-Methoprene | Butylhydroxyanisole (E320) | Butylhydroxytoluene (E321) |
| Over 2 – 10     | for small dogs       | 1 tube of 0.67 ml | 67 mg              | 60.30 mg               | 0.134 mg                   | 0.067 mg                   |
| Over 10 – 20    | for medium dogs      | 1 tube of 1.34 ml | 134 mg             | 120.60 mg              | 0.27 mg                    | 0.13 mg                    |
| Over 20 – 40    | for large dogs       | 1 tube of 2.68 ml | 268 mg             | 241.20 mg              | 0.54 mg                    | 0.27 mg                    |
| Over 40 – 60    | for extra large dogs | 1 tube of 4.02 ml | 402 mg             | 361.80 mg              | 0.80 mg                    | 0.40 mg                    |

#### **3. Target species**

Dogs.

#### **4. Indications for use**

##### **What is VetBox Combo for?**

VetBox Combo spot-on solution for dogs is used against fleas *Ctenocephalides* spp. (including their eggs and juvenile forms), and/or ticks (*Ixodes ricinus*, *Dermacentor reticulatus* *Dermacentor variabilis*, *Rhipicephalus sanguineus*) and/or biting lice (*Trichodectes canis*) on dogs.

Efficacy against fleas and their multiplication lasts for up to 8 weeks. Efficacy against ticks lasts for up to 4 weeks.

## **5. Contraindications**

### **Animal safety with VetBox Combo**

Do not use on puppies less than 8 weeks old or weighing less than 2 kg.

Do not use on rabbits as adverse reactions, including death, could occur.

Do not use on sick or convalescent animals.

Do not use if your dog has a hypersensitivity to fipronil S-methoprene or the other ingredients.

Do not use in any other animal species, including cats and ferrets.

Do not apply on wounds or damaged skin.

Avoid contact with your dog's eyes. If this occurs, immediately and thoroughly flush with water. If necessary, speak to your veterinary surgeon for advice.

No specific studies have been performed in pregnant or nursing dogs. Therefore, speak to your veterinary surgeon before using VetBox Combo in these situations.

Speak to your veterinary surgeon if you notice any adverse effects following the use of VetBox Combo, even those not already listed in the package leaflet or you think that the medicine has not worked.

## **6. Special warnings**

### **User safety with VetBox Combo**

#### **PLEASE READ THESE WARNINGS BEFORE EACH USE**

This veterinary medicinal product can cause mucous membrane, skin and eye irritation. Avoid getting the veterinary medicinal product on your skin, or in your mouth and eyes.

People with known hypersensitivity (allergy) to Fipronil, S-Methoprene or alcohol should avoid contact with the veterinary medicinal product.

Avoid contents coming into contact with the fingers. If this occurs, wash hands with soap and water.

If the veterinary medicinal product gets in your eyes, immediately and thoroughly flush the eyes with water.

In case of accidental ingestion, seek medical advice immediately and show the package leaflet or the label to the physician.

Wash hands after use.

Do not smoke, drink or eat during application.

Treated animals should not be handled until the application site is dry, and children should not be allowed to play with treated animals until the application site is dry. It is therefore recommended that animals are not treated during the day, but should be treated during the early evening, and that recently treated animals are not allowed to sleep with owners, especially children.

Keep pipettes in original packaging until ready to use.

### **Should I use anything else with VetBox Combo?**

When treating infestations of parasites, all in-contact animals should be treated with an appropriate product at the same time. Fleas from pets often infest the animal's basket, bedding and regular resting areas such as carpets and soft furnishings which should be treated, in case of massive infestation and at the beginning of the control measures, with a suitable insecticide and vacuumed regularly.

Do not use simultaneously with other flea products which are applied directly on to the animal.

## 7. Adverse events

Dogs:

|   |   |
|---|---|
| Very rare (<1 animal / 10,000 animals treated, including isolated reports): | Application site hair loss <sup>1</sup> , Application site itching <sup>1</sup> , Application site reddening <sup>1</sup> , Application site skin discolouration <sup>1</sup><br>Generalised itching, General hair loss<br>Hypersalivation <sup>2</sup> , Vomiting<br>Neurological signs <sup>3</sup> , Hyperaesthesia <sup>3</sup><br>Respiratory signs<br>Depression <sup>3</sup> |
|---|---|

<sup>1</sup> Transient

<sup>2</sup> May be observed briefly in the case of licking the administration site, also (mainly due to the nature of the carrier)

<sup>3</sup> Reversible

*Reporting adverse events is important. It allows continuous safety monitoring of a product. If you notice any side effects, even those not already listed in this package leaflet, or you think that the medicine has not worked, please contact, in the first instance, your veterinarian. You can also report any adverse events to the marketing authorisation holder or the local representative of the marketing authorisation holder using the contact details at the end of this leaflet, or via your national reporting system at:*

*E-mail: [adverse.events@vmd.gov.uk](mailto:adverse.events@vmd.gov.uk)*

*Website: <https://www.gov.uk/report-veterinary-medicine-problem/animal-reacts-medicine>*

## 8. Dosage for each species, routes and method of administration

### How often should I use VetBox Combo?

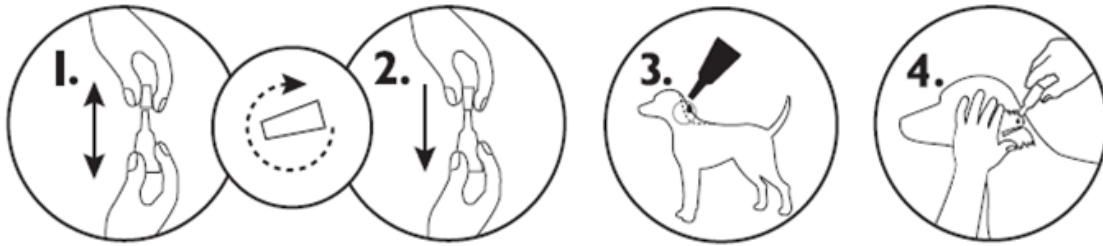
Always leave a minimum period of 4 weeks between treatments. Adult fleas are killed for up to 8 weeks and ticks are killed for up to 4 weeks. When a continued risk of flea infestation is anticipated the treatment can be repeated every 8 weeks or, when there is also a risk of tick infestation, the treatment can be repeated every 4 weeks.

## 9. Advice on correct administration

### How do I use VetBox Combo?

Animals should be weighed accurately prior to treatment; do not use in puppies weighing less than 2 kg.

One tube should be given to each dog, applied to the skin as shown below.



1. Remove the pipette from its packaging. Hold the pipette in an upright position, twist and pull the cap off.
2. Turn the cap around and place the other end of the cap back on the pipette. Push and twist the cap to break the seal, then remove the cap from the pipette.
3. Part the coat on the back of the animal at the base of the neck in front of the shoulder blades until the skin is visible. Place the tip of the pipette onto the skin and squeeze the pipette several times to empty its contents completely and directly onto the skin in one spot.



## 10. Withdrawal periods

Not applicable.

## 11. Special storage precautions

### General precautions for VetBox Combo

Keep out of the sight and reach of children.

Do not use this veterinary medicinal product after the expiry date which is stated on the label after Exp. The expiry date refers to the last day of that month.

### How should VetBox Combo be stored?

This veterinary medicinal product does not require any special temperature storage conditions.

Store in the original package in order to protect from light and moisture.

## 12. Special precautions for disposal

### How should VetBox Combo be disposed?

Medicines should not be disposed of via wastewater.

The veterinary medicinal product should not enter water courses as Fipronil and (S) methoprene may be dangerous for fish and other aquatic organisms. Do not contaminate ponds, waterways or ditches with the veterinary medicinal product or empty container.

Use take-back schemes for the disposal of any unused veterinary medicinal product or waste materials derived thereof in accordance with local requirements and with any applicable national collection systems. These measures should help to protect the environment.

Ask your veterinary surgeon or pharmacist how to dispose of medicines no longer required.

Dogs should not be allowed to swim in watercourses for 2 days after application.

#### **14. Marketing authorisation numbers and pack sizes**

Vm 01656/4162

Available in cartons containing 1, 3 or 6 pipettes.

Not all pack sizes may be marketed.

#### **15. PID LINK (Do not print heading)**

*[The following statement must be included where reference to the European Union Product Database is included on the product information. This statement is relevant to both UK(GB) and UK(NI) products:]*

Find more product information by searching for the 'Product Information Database' on [www.gov.uk](http://www.gov.uk).

#### **16. Contact details**

Marketing authorisation holder and manufacturer for the batch release:

Krka d.d., Novo mesto

Šmarješka cesta 6

8501 Novo mesto

Slovenia

Local representatives and contact details to report suspected adverse reactions:

KRKA UK Ltd

United Kingdom

Tel: 02071 646 156

info.uk@krka.biz

For any information about this veterinary medicinal product, please contact the local representative of the marketing authorisation holder.

#### **17. Other information**

|         |
|---------|
| AVM-GSL |
|---------|

*Gavin Hall*  
Approved: 10 April 2026