

SUMMARY OF PRODUCT CHARACTERISTICS

1. NAME OF THE VETERINARY MEDICINAL PRODUCT

VetBox Combo 67 mg/ 60.3 mg Spot-on Solution for Small Dogs

2. QUALITATIVE AND QUANTITATIVE COMPOSITION

Each 0.67 ml pipette contains:

Active substance:

Fipronil	67 mg
S-Methoprene	60.3 mg

Excipients:

Butylhydroxyanisole (E320)	0.134 mg
Butylhydroxytoluene (E321)	0.067 mg

For the full list of excipients, see section 6.1.

3. PHARMACEUTICAL FORM

Spot-on solution.

Clear yellow solution.

4. CLINICAL PARTICULARS

4.1 Target species

Dogs >2-10 kg (dogs weighing over 2 kg and up to 10 kg)

4.2 Indications for use, specifying the target species

To be used against infestations with fleas, alone or in association with ticks and/or biting lice.

Treatment of flea infestations (*Ctenocephalides* spp.). Insecticidal efficacy against new infestations with adult fleas persists for 8 weeks. Prevention of the multiplication of fleas by inhibiting the development of eggs (ovicidal activity) and larvae and pupae (larvicidal activity) originating from eggs laid by adult fleas for eight weeks after application.

Treatment of tick infestations (*Ixodes ricinus*, *Dermacentor variabilis*, *Dermacentor reticulatus*, *Rhipicephalus sanguineus*). The product has persistent acaricidal efficacy for up to 4 weeks against ticks.

Treatment of infestations with biting lice (*Trichodectes canis*).

4.3 Contraindications

In the absence of available data, the product should not be used on puppies less than 8 weeks old and/or weighing less than 2 kg.

Do not use on sick (e.g. systemic diseases, fever) or convalescent animals.

Do not use if your dog has a hypersensitivity to fipronil or S-methoprene or the other ingredients.

Do not apply on wounds or damaged skin.

Do not use in cats and ferrets, as this could lead to overdosing.

Do not use in rabbits, as adverse reactions and even mortality could occur.

Do not use in any other non-target species.

4.4 Special warnings for each target species

Bathing/immersion in water within 2 days after application of the product and more frequent bathing than once a week should be avoided, as no study has been performed to investigate how this affects the efficacy of the product. Emollient shampoos can be used prior to treatment, but reduce the duration of protection against fleas to approximately 5 weeks when used weekly after application of the product. Weekly bathing with a 2% chlorhexidine medicated shampoo did not affect efficacy against fleas during a 6 week long study.

There may be an attachment of a few ticks. For this reason a transmission of infectious diseases cannot be completely excluded if conditions are unfavourable. When treating infestations of parasites, all in-contact animals should be treated with an appropriate product at the same time. Fleas from pets often infest the animal's basket, bedding and regular resting areas such as carpets and soft furnishings which should be treated, in case of massive infestation and at the beginning of the control measures, with a suitable insecticide and vacuumed regularly.

4.5 Special precautions for use

i) Special precautions for use in animals

Avoid contact with the animal's eyes.

It is important to make sure that the product is applied to an area where the animal cannot lick it off and to make sure that animals do not lick each other following treatment.

ii) Special precautions to be taken by the person administering the veterinary medicinal product to animals

This product can cause mucous membrane, skin and eye irritation. Therefore, contact of the product with mouth, skin and eyes should be avoided.

People with a known hypersensitivity (allergy) to insecticides or alcohol should avoid contact with the product. Avoid contents coming into contact with the fingers. If this occurs, wash hands with soap and water.

After accidental ocular exposure the eye should be rinsed carefully in clean water.

If the product is accidentally swallowed, seek medical advice immediately and show the package leaflet to the physician.

Wash hands after use.

Do not smoke, drink or eat during application.

Treated animals should not be handled until the application site is dry, and children should not be allowed to play with treated animals until the application site is dry. It is therefore recommended that animals are not treated during the day, but should be treated during the early evening, and that recently treated animals are not allowed to sleep with owners, especially children.

Keep pipettes in original packaging until ready to use.

iii) Other precautions

Dogs should not be allowed to swim in watercourses for 2 days after application (see section 6.6).

4.6 Adverse reactions (frequency and seriousness)

Among the very rare suspected adverse reactions, transient skin reactions on the application site (skin discoloration, local hair loss, itching, redness) and general itching or hair loss have been reported after use. Excessive salivation, reversible nervous signs (increased sensitivity to stimulation, depression, other nervous signs), vomiting or respiratory symptoms have also been observed after use.

In the case of licking the administration site, a brief period of excessive salivation may be observed due mainly to the nature of the carrier.

Do not overdose.

4.7 Use during pregnancy, lactation or lay

Can be used during pregnancy and lactation.

4.8 Interaction with other medicinal products and other forms of interaction

Do not use simultaneously with other flea products which are applied directly on to the animal.

4.9 Amounts to be administered and administration route

Route of administration and dosage:

External use only.

Administer by topical application to the skin; one pipette of 0.67 ml (67 mg fipronil + 60.3 mg (S)-methoprene) per dog weighing over 2 and up to 10 kg.

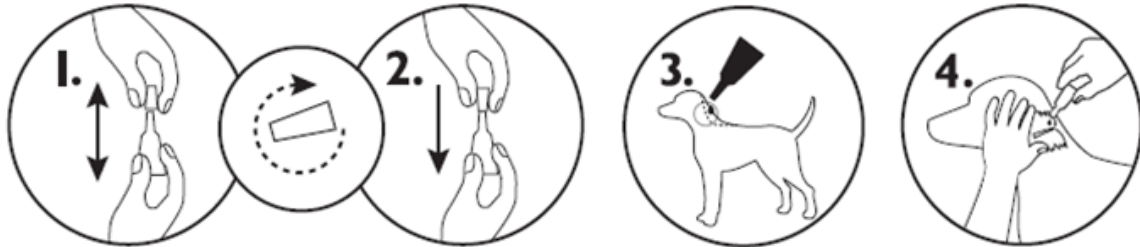
This corresponds to a minimum recommended dose of 6.7 mg/kg for fipronil and 6 mg/kg for (S)-methoprene, by topical application to the skin.

In the absence of safety studies the minimum treatment interval is 4 weeks.

Method of administration:

1. Remove the pipette from its packaging. Hold the pipette in an upright position, twist and pull the cap off.

2. Turn the cap around and place the other end of the cap back on the pipette. Push and twist the cap to break the seal, then remove the cap from the pipette.
3. Part the coat on the back of the animal at the base of the neck in front of the shoulder blades until the skin is visible. Place the tip of the pipette onto the skin and squeeze the pipette several times to empty its contents completely and directly onto the skin in one spot.



Temporary changes to the coat (clumped/greasy hair) may be noted at the application site.

4.10 Overdose (symptoms, emergency procedures, antidotes), if necessary

No adverse effects were observed in target animal safety studies in 8 week-old puppies, growing dogs and dogs weighing about 2 kg treated once at five times the recommended dose. The risk of experiencing adverse effects (see section 4.6) may however increase when overdosing, so animals should always be treated with the correct pipette size according to bodyweight.

4.11 Withdrawal period(s)

Not applicable.

5. PHARMACOLOGICAL PROPERTIES

Pharmacotherapeutic group: Ectoparasiticides for topical use, incl. insecticides
ATCvet code: QP53AX65.

5.1 Pharmacodynamic properties

Fipronil is an insecticide and acaricide belonging to the phenylpyrazole family. It acts by interacting with ligand-gated chloride channels, in particular those gated by the neurotransmitter gamma-aminobutyric acid (GABA), thereby blocking pre- and post-synaptic transfer of chloride ions across cell membranes. This results in uncontrolled activity of the central nervous system and death of insects or acarines. Fipronil kills fleas within 24 hours and ticks (*Dermacentor reticulatus*, *Dermacentor variabilis*, *Rhipicephalus sanguineus*, and *Ixodes ricinus*) and lice within 48 hours post-exposure.

(S)-Methoprene is an insect growth regulator (IGR) of the class of compounds known as juvenile hormone analogues that inhibit the development of immature stages of insects. This compound mimics the action of juvenile hormone and causes

impaired development and death of the developing stages of fleas. The on-animal ovicidal activity of (S)-methoprene results from either direct penetration of the eggshell of newly laid eggs or from absorption through the cuticle of the adult fleas. (S)-methoprene is also effective in preventing flea larvae and pupae from developing, which prevents contamination of the environment of the treated animals with the immature stages of fleas.

5.2 Pharmacokinetic particulars

Studies of metabolism of fipronil have demonstrated that the major metabolite is the sulfone derivative of fipronil.

(S)-methoprene is extensively degraded into carbon dioxide and acetate that are subsequently incorporated into endogenous materials.

The pharmacokinetic profiles after topical application of fipronil and (S)-methoprene in combination were studied in dogs in comparison to intravenous dosing of fipronil or (S)-methoprene alone. This established absorption and other pharmacokinetic parameters. The topical application resulted in low systemic absorption of fipronil (11%) with a mean maximum concentration (C_{max}) of approximately 35 ng/ml fipronil and 55 ng/ml of fipronil sulfone in plasma.

Peak fipronil plasma concentrations are slowly attained (mean t_{max} approximately 101 h), and decline slowly (mean terminal half-life approximately 154 h, highest values are observed for males).

Fipronil is extensively metabolised to fipronil sulfone after topical administration.

Plasma concentrations of (S)-methoprene were below the limit of quantitation (20 ng/ml) in dogs after topical application.

Both (S)-methoprene and fipronil, together with its major metabolite, are well-distributed in the haircoat of a dog within one day after application. The concentrations of fipronil, fipronil sulfone and (S)-methoprene in the hair coat decrease with time and are detectable for at least 60 days after dosing. Parasites are killed through contact rather than systemic exposure.

No pharmacological interaction between fipronil and (S)-methoprene was noted.

6. PHARMACEUTICAL PARTICULARS

6.1 List of excipients

Butylhydroxyanisole (E320)
Butylhydroxytoluene (E321)
Povidone (K25)
Polysorbate 80
Ethanol 96 per cent
Diethylene glycol monoethyl ether

6.2 Major Incompatibilities

None known.

6.3 Shelf life

Shelf life of the veterinary medicinal product as packaged for sale: 2 years

6.4 Special precautions for storage

This veterinary medicinal product does not require any special temperature storage conditions. Store in the original package in order to protect from light and moisture.

6.5 Nature and composition of immediate packaging

White polypropylene single-dose pipette packaged in aluminium foil sachets.
Cardboard box containing 1, 3 or 6 pipettes.
Not all pack sizes may be marketed.

6.6 Special precautions for the disposal of unused veterinary medicinal product or waste materials derived from the use of such products

Any unused veterinary medicinal product or waste materials derived from such veterinary medicinal product should be disposed of in accordance with local requirements. Fipronil and S-methoprene may adversely affect aquatic organisms. Do not contaminate ponds, waterways or ditches with the product or empty container.

7. MARKETING AUTHORISATION HOLDER

KRKA, d.d., Novo mesto
Šmarješka cesta 6
8501 Novo mesto
Slovenia

8. MARKETING AUTHORISATION NUMBER

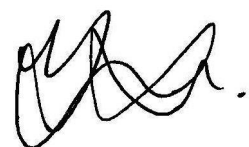
Vm 01656/4159

9. DATE OF FIRST AUTHORISATION

27 February 2019

10. DATE OF REVISION OF THE TEXT

September 2023



Approved: 20 September 2023