

## **SUMMARY OF PRODUCT CHARACTERISTICS**

### **1. NAME OF THE VETERINARY MEDICINAL PRODUCT**

VetUK Imidacloprid Flea Treatment for Cats, Dogs and Rabbits under 4Kg.  
40mg Spot-On solution

### **2. QUALITATIVE AND QUANTITATIVE COMPOSITION**

Each 0.4 ml pipette contains:

**Active substance:**

Imidacloprid 40 mg

**Excipients:**

<b>Qualitative composition of excipients and other constituents</b>	<b>Quantitative composition if that information is essential for proper administration of the veterinary medicinal product</b>
Butylhydroxytoluene (E 321)	0.4 mg
Benzyl alcohol (E 1519)	
Propylene carbonate	

Clear yellow to slightly brownish solution.

### **3. CLINICAL INFORMATION**

#### **3.1 Target species**

Cats, dogs and pet rabbits

#### **3.2 Indications for use for each target species**

Cats & Pet Rabbits

Prevention and treatment of flea (*Ctenocephalides felis*) infestations in cats of less than 4 kg body weight.

Treatment of flea infestations in rabbits of less than 4 kg body weight.

Fleas are killed within one day following treatment. One treatment prevents further flea infestation for three to four weeks on cats and up to one week on pet rabbits.

Dogs

For the prevention and treatment of flea infestations and for the treatment of biting lice (*Trichodectes canis*) on dogs of less than 4 kg body weight.

Fleas on dogs are killed within one day following treatment. One treatment prevents further flea infestation for four weeks.

### **3.3 Contraindications**

#### Cats & Pet Rabbits

Do not treat unweaned kittens of less than 8 weeks of age.

Do not use on pet rabbits of less than 10 weeks of age.

Do not use in case of hypersensitivity to the active substance or to any of the excipients.

#### Dogs

Do not treat unweaned puppies of less than 8 weeks of age.

Do not use in case of hypersensitivity to the active substance or to any of the excipients.

### **3.4 Special warnings**

This product is for topical use and should not be administered orally.

Apply only to undamaged skin

Care should be taken to avoid the contents of the pipette coming into contact with the eyes or mouth of the recipient animal.

Do not allow recently treated animals to groom each other.

### **3.5 Special precautions for use**

#### Special precautions for safe use in the target species:

If signs of disease persist or appear, consult a veterinary surgeon.

Re-infestation from emergence of new fleas in the environment may continue to occur for six weeks or longer after treatment is initiated. More than one treatment may therefore be required, depending on the level of fleas in the environment. To aid reduction in environmental challenge, the additional use of a suitable environmental treatment against adult fleas and their developing stages is recommended. In order to reduce further the environmental challenge, it is recommended that all cats, dogs and rabbits in the household are treated.

The product remains effective if the animal becomes wet, for example after exposure to heavy rain. However, re-treatment may become necessary, depending on the presence of fleas in the environment. In these cases do not treat more frequently than once weekly.

#### Special precautions to be taken by the person administering the veterinary medicinal product to animals;

This product can cause mucous membrane, skin and eye irritation.

Therefore, contact of the product with mouth, skin and eyes should be avoided.

This product contains benzyl alcohol and may cause skin sensitisation or transient skin reactions in rare cases (for example, irritation, tingling).

People with a known hypersensitivity (allergy) to insecticides or alcohol should avoid contact with the product.

Do not smoke, drink or eat during application.

If contact with the skin occurs, wash hands with soap and water.

If the product gets into eyes, the eyes should be thoroughly rinsed with clean water. If skin or eye irritation persists, or the product is accidentally swallowed, seek medical advice.

Do not stroke, groom or play with treated animals until the application site is dry. It is therefore recommended that animals are not treated during the day, but should be treated during the early evening, and that recently treated animals are not allowed to sleep with owners, especially children.

Dispose of used pipettes immediately.

Wash hands after use.

Special precautions for the protection of the environment:

Imidacloprid is toxic to aquatic organisms. To avoid adverse effects on aquatic organisms, treated dogs should not be allowed to enter surface water for 48 hours after treatment.

Other precautions:

The solvent in this product may stain certain materials including leather, fabrics, plastics and finished surfaces. Allow the application site to dry before permitting contact with such materials.

### 3.6 Adverse events

Cats:

Very rare (<1 animal / 10 000 animals treated, including isolated reports):	Agitation Diarrhoea <sup>1</sup> , Hypersalivation <sup>2</sup> , Vomiting <sup>1</sup> Neurological signs (e.g. Depression, Incoordination, Tremor) Application site reaction (e.g. Hair loss, Itching, Reddening of the skin, Skin lesion)
---	--

<sup>1</sup> May occur after oral ingestion.

<sup>2</sup> May occur if the cat licks the application site immediately after treatment due to the bitter taste. This is not a sign of intoxication and disappears within some minutes without treatment.

Rabbits:

Very rare (<1 animal / 10 000 animals treated, including isolated reports):	Agitation Diarrhoea <sup>1</sup> , Hypersalivation <sup>2</sup> Application site reaction (e.g. Hair loss, Itching, Reddening of the skin, Skin lesion)
---	---

<sup>1</sup> May occur after oral ingestion.

<sup>2</sup> May occur if the cat licks the application site immediately after treatment due to the bitter taste. This is not a sign of intoxication and disappears within some minutes without treatment.

Dogs:

<p>Very rare (<math>&lt;1</math> animal / 10 000 animals treated, including isolated reports):</p>	<p>Agitation Hypersalivation<sup>1</sup> Disorientation, Neurological signs (e.g. Depression, Incoordination, Tremor) Application site reaction (e.g. Hair loss, Itching, Reddening of the skin, Skin lesion)</p>
--	---

<sup>1</sup> May occur if the dog licks the application site immediately after treatment due to the bitter taste. This is not a sign of intoxication and disappears within some minutes without treatment.

Reporting adverse events is important. It allows continuous safety monitoring of a veterinary medicinal product. Reports should be sent, preferably via a veterinarian, to either the marketing authorisation holder or its local representative or the national competent authority via the national reporting system. See the package leaflet for respective contact details.

### 3.7 Use during pregnancy, lactation or lay

#### Pregnancy and lactation:

No reproductive toxic effects have been observed in rats and no primary embryotoxic or teratogenic toxic effects have been observed during the studies on rats and rabbits. Studies on pregnant and lactating bitches, queens and does together with their offspring are limited. Evidence so far suggests that no adverse effects are to be expected in these animals. Consult your veterinary surgeon before using in pregnant or nursing animals.

### 3.8 Interaction with other medicinal products and other forms of interaction

Do not use simultaneously with other flea products which are applied directly onto the animal.

### 3.9 Administration routes and dosage

This product is for external use only and should not be administered orally. Animals should be weighed accurately prior to treatment.

#### *Dosage and Treatment Schedule*

Cat/Rabbit/Dog (kg body weight)	Product	Number of Pipettes	Imidacloprid (mg/kg body weight)
Less than 4 kg	VetUK Imidacloprid Flea Treatment for Cats, Dogs and Pet Rabbits under 4kg	1 x 0.4 ml	minimum of 10

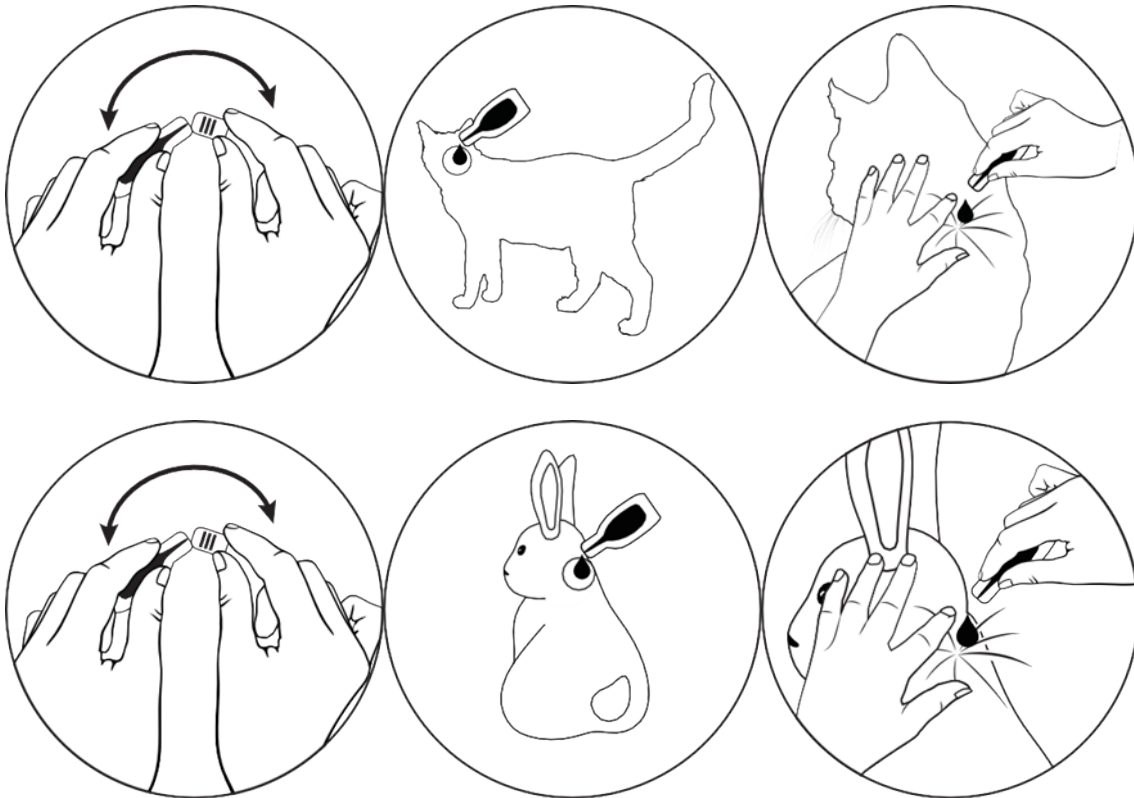
In cases of biting louse infestation, a further veterinary examination 30 days after treatment is recommended as some animals may require a second treatment.

Method of administration:

Cat and rabbits

Hold the pipette upright. Tap the narrow part of the pipette to ensure the contents remain within the main body of the pipette. Snap back the tip. Part the hair on the animal's neck at the base of the skull until the skin is visible.

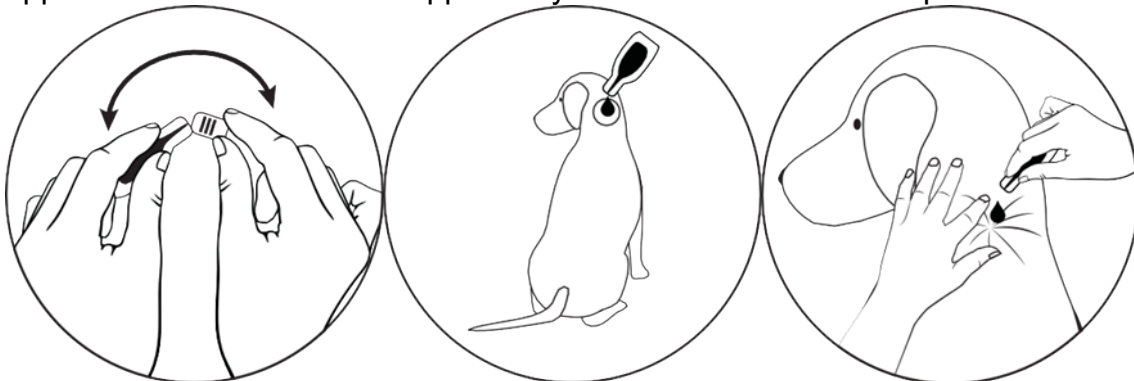
Place the tip of the pipette on the skin and squeeze the pipette several times to empty its contents completely and directly onto the skin in one spot. Correct application will minimise the opportunity for the animal to lick the product.



Dogs

Hold the pipette upright. Tap the narrow part of the pipette to ensure the contents remain within the main body of the pipette. Snap back the tip. With the dog in the standing position, part the coat between the shoulder blades until the skin is visible.

Place the tip of the pipette on the skin and squeeze the pipette several times to empty its contents completely and directly onto the skin in one spot. Correct application will minimise the opportunity for the animal to lick the product.



### **3.10 Symptoms of overdose (and where applicable, emergency procedures and antidotes)**

#### Cats & Rabbits

In cats, no adverse clinical signs were produced using doses of five times the therapeutic level weekly for eight consecutive weeks.

In rabbits, no adverse clinical signs were seen using doses of up to 45 mg/kg body weight (4 times the therapeutic level) weekly for 4 consecutive weeks.

#### Dogs

No adverse clinical signs were produced by either individual doses of up to 200 mg/kg body weight (five to eight times the therapeutic dose), daily treatments at 100 mg/kg body weight for five consecutive days or weekly treatments at five times the maximum dose rate for eight consecutive weeks.

In rare cases of overdose or licking of treated fur, nervous system disorders (such as twitching, tremors, ataxia, mydriasis, miosis, lethargy) can occur in cats.

Poisoning following inadvertent oral uptake in animals is unlikely. In this event, treatment should be symptomatic under veterinary medical attention. There is no known specific antidote but administration of activated charcoal may be beneficial.

### **3.11 Special restrictions for use and special conditions for use, including restrictions on the use of antimicrobial and antiparasitic veterinary medicinal products in order to limit the risk of development of resistance**

Not applicable.

### **3.12 Withdrawal periods**

Do not use on rabbits intended for human consumption.

## **4. PHARMACOLOGICAL INFORMATION**

### **4.1 ATCvet code:**

QP53AX17

### **4.2 Pharmacodynamics**

Imidacloprid, 1-(6-Chloro-3-pyridylmethyl)-N-nitro-imidazolidin-2-ylideneamine is an ectoparasiticide belonging to a group of chloronicotinyl compounds. Chemically, it is more accurately described as a chloronicotinyl nitroguanidine.

The substance has a high affinity for the nicotinic acetylcholine receptors in the post-synaptic region of the central nervous system (CNS). The ensuing inhibition of cholinergic transmission in insects results in paralysis and death. Due to the weak nature of the interaction with mammalian nicotinic receptor sites and the postulated poor penetration through the blood/brain barrier in mammals, it has virtually no effect on the mammalian CNS. The minimal pharmacological activity in mammals is supported by safety studies involving systemic administration of sub-lethal doses to rabbits, mice and rats.

In further studies, in addition to the adulticide flea efficacy of imidacloprid, a larvicidal flea efficacy in the surroundings of the treated pet has been demonstrated. Larval stages in the cat's and dog's surroundings are killed following contact with a treated animal.

### **4.3 Pharmacokinetics**

The product is indicated for cutaneous administration. Following topical application in cats, the solution is quickly distributed over the animal. Acute dermal studies in the rat and target animal overdose and serum kinetic studies have established that systemic absorption is very low, transient and not relevant for the clinical efficacy. This has been further demonstrated by a study in which fleas were not killed after having fed on previously treated animals once the animal's skin and fur had been cleaned of all active material.

## **5. PHARMACEUTICAL PARTICULARS**

### **5.1 Major incompatibilities**

None known.

### **5.2 Shelf life**

Shelf life of the veterinary medicinal product as packaged for sale: 3 years

### **5.3 Special precautions for storage**

This veterinary medicinal product does not require any special storage conditions.

### **5.4 Nature and composition of immediate packaging**

A white pipette composed of a heat-formed shell of composed of a polypropylene/cyclic olefin copolymer/polypropylene layer and a polyethylene/ethylene vinyl alcohol/polyethylene layer.

Box with 1, 2, 3, 4, 6 pipettes in individual foil sachets.

Not all pack sizes may be marketed.

### **5.5 Special precautions for the disposal of unused veterinary medicinal product or waste materials derived from the use of such products**

Medicines should not be disposed of via wastewater.

The veterinary medicinal product should not enter water courses as Imidacloprid may be dangerous for fish and other aquatic organisms.

Use take-back schemes for the disposal of any unused veterinary medicinal product or waste materials derived thereof in accordance with local requirements and with any national collection systems applicable to the veterinary medicinal product concerned.

Do not contaminate ponds, waterways or ditches with the product or empty containers.

**6. NAME OF THE MARKETING AUTHORISATION HOLDER**

EU Pharmaceuticals Ltd

**7. MARKETING AUTHORISATION NUMBER**

Vm 39787/4070

**8. DATE OF FIRST AUTHORISATION**

02 July 2019

**9. DATE OF THE LAST REVISION OF THE SUMMARY OF THE PRODUCT CHARACTERISTICS**

September 2025

**10. CLASSIFICATION OF VETERINARY MEDICINAL PRODUCT**

Veterinary medicinal product not subject to prescription.

Find more product information by searching for the 'Product Information Database' on [www.gov.uk](http://www.gov.uk).

*Gavin Hall*  
Approved: 07 October 2025